



CLIENT
TOWN OF SURSIDE
COMMUNITY CENTER
 9301 Collins Avenue, SurSIDE, Florida 33154

DESIGNER
SPILLS CANDELA DMJM
 800 DOUGLAS ENTRANCE, SUITE 200
 CORAL GABLES, FL. 33134
 T. 305-444-4653 F. 305-447-3590
 www.spillscondeladmj.com
 FLORIDA LICENSE AA0003298

CONSULTANTS
 LANDSCAPE ARCHITECTURE
SAVINO & MILLER DESIGN STUDIO
 1245 NE 5TH AVENUE, MIAMI, FLORIDA 33136
 TEL: (305) 887-9922 FAX: (305) 888-8083
 ESTIMATING CONSULTANT
ONS CONSTRUCTION MANAGEMENT SERVICES
 8900 BAYVIEW BLVD, SUITE 301, MIAMI, FLORIDA 33154
 TEL: (305) 491-1811 FAX: (305) 497-3192
 COASTAL CONTRIBUTION
EDGC CORPORATION
 7405 SW 27TH AVENUE, MIAMI, FLORIDA 33156
 TEL: (305) 888-4100 FAX: (305) 888-4180
 FOOD SERVICES CONSULTANT
STRATA DESIGN INTERNATIONAL
 1700 S.W. 12TH AVENUE, SUITE 1000, MIAMI, FLORIDA 33135
 TEL: (305) 355-3555 FAX: (305) 728-8010
POOL CONSULTANT
AQUADYNAMICS, INC.
 5305 SW 72ND AVENUE, SUITE 201, MIAMI, FLORIDA 33155
 TEL: (305) 687-8875 FAX: (305) 682-0002
 LEED CONSULTANT
SPINNAKER GROUP, INC.
 501 SPINNAKER, WESTON, FL 33326
 TEL: (954) 347-0867 FAX: (954) 217-3814
 REGISTRATION

PROFESSIONAL OF RECORD: JESUS CRUZ
 DISCIPLINE: ARCHITECTURE
 REGISTRATION NO. AR0006906

ISSUE

NO.	DATE	DESCRIPTION

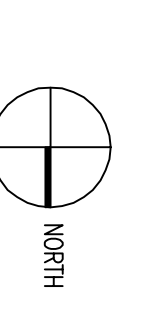
MARK	DATE	DESCRIPTION

PROJECT NO: **60028604**
 DRAWN BY: _____
 CHECKED BY: _____
 DATE: **10-22-2009**

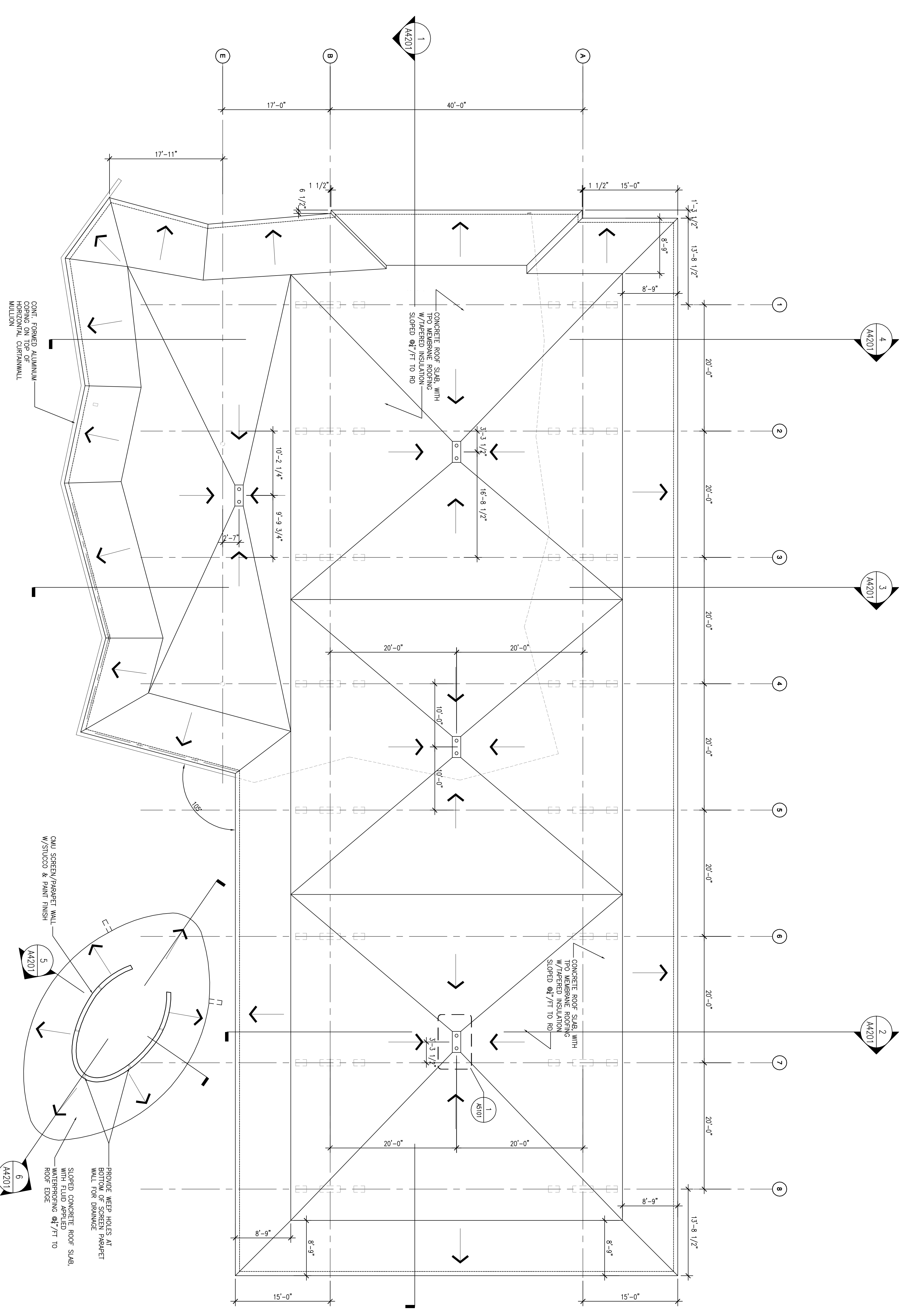
KEY PLAN

SHEET TITLE
ROOF PLAN

A2.2.02



1 | ROOF PLAN
 1/8" = 1'-0"



© 2009 DMJM-HN, Inc. Rev. 2003-1