

DESIGNER

SPILLIS CANDELA DMJM

800 DOUTLAS ENTRANCE, SUITE 200
CORAL GABLES, FL. 305-447-3334
FL. 305-444-6659
www.spilliscandeladvmjm.com

FLORIDA LICENSE AA0003298

CONSULTANTS

LANDSCAPE ARCHITECTURE

SAVINO & MILLER DESIGN STUDIO

12345 W. 5TH AVENUE, MIAMI, FLORIDA 33161
TEL: (305) 897-9827 FAX: (305) 897-9833

ESTIMATING CONSULTANT

CMS CONSTRUCTION MANAGEMENT SERVICES

91 BAYVIEW DRIVE, SUITE 301 (INTERCO), MIAMI, FL 33149
TEL: (954) 491-1811 FAX: (954) 491-3142

COASTAL CONSTRUCTION

EDCO CORPORATION

7445 SW 27TH AVENUE, MIAMI, FLORIDA 33156
TEL: (305) 858-8100 FAX: (305) 858-4980

FOOD SERVICES CONSULTANT

STARKS DESIGN INTERNATIONAL

13345 BAYVIEW DRIVE, SUITE 301, MIAMI, FLORIDA 33149
TEL: (954) 315-3555 FAX: (954) 728-8111

POOL CONSULTANT

AQUADYNAMICS, INC.

5201 SW 25TH AVE, SUITE 202, MIAMI, FLORIDA 33155
TEL: (305) 667-8075 FAX: (305) 662-1002

LEED CONSULTANT

SPINNAKER GROUP, INC.

501 SPINNAKER, WESTON, FL. 33326
TEL: (954) 341-8867 FAX: (954) 217-3814

REGISTRATION

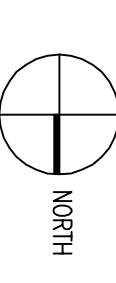
PROFESSIONAL OF RECORD: JESUS CRUIZ

DISCIPLINE: ARCHITECTURE

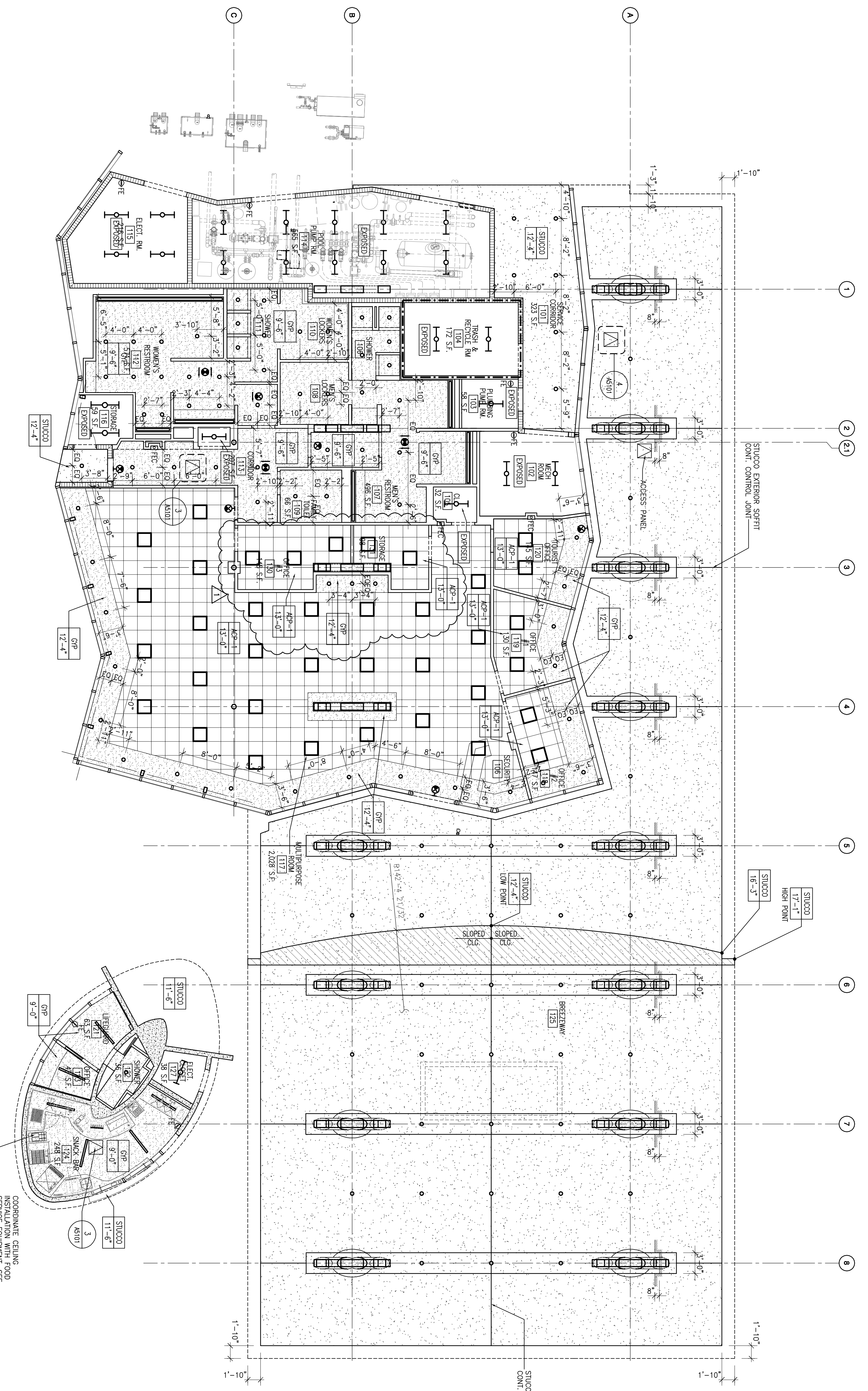
REGISTRATION NO. AR0006906

ISSUE	DESCRIPTION
Δ	03-01-10 CITY REVIEW COMMENTS

PROJECT NO:	60028604
DRAWN BY:	CEILING PLAN
CHECKED BY:	10-22-2009
DATE:	
KEY PLAN:	



1/8" = 1'-0"
GROUND FLOOR CEILING PLAN



LEGEND

- | | |
|--|---|
| | SUSPENDED 2'X2' ACOUSTICAL CEILING PANELS |
| | GRAPE PLASTER CEILING |
| | GRAPE BOARD CEILING INTERIOR AC SERVICES |
| | GRAPE BOARD CEILING INTERIOR AC SERVICES |
| | EXPOSED UNDERSIDE OF ROOF OR ROOF STRUCTURE |
| | 2'X2' FLUORESCENT LUMINAIRE DRAWINGS FOR THE |
| | 2'X2' FLUORESCENT LUMINAIRE DRAWINGS FOR THE |
| | 2'X2' FLUORESCENT LUMINAIRE DRAWINGS FOR THE |
| | DIRECT-INDUCT RECESSED SURFACE MOUNTED LUMINAIRE SURFACE MOUNTED, SEE ELECTRICAL DRAWINGS FOR THE (CATERING/MEDIA CENTER) |
| | 6'X6' RECESSED FLUORESCENT LUMINAIRE SURFACE MOUNTED, SEE ELECTRICAL DRAWINGS FOR THE (AMPHITHEATRE CEILING SYSTEM) |
| | 1'X4' FLUORESCENT LUMINAIRE DRAWINGS FOR THE |
| | 1'X4' FLUORESCENT LUMINAIRE DRAWINGS FOR THE |
| | 1'X4' FLUORESCENT LUMINAIRE, WALL MOUNTED, SEE ELECTRICAL DRAWINGS FOR THE |
| | 2'X2' FLUORESCENT LUMINAIRE DRAWINGS FOR THE |
| | 2'X2' FLUORESCENT LUMINAIRE, WALL MOUNTED, SEE ELECTRICAL DRAWINGS FOR THE |
| | 2'X2' FLUORESCENT LUMINAIRE, WALL MOUNTED, SEE ELECTRICAL DRAWINGS FOR THE |
| | 2-INCH FIRE RATED CEILING ABOVE FUNCTIONAL ROOM LUMINAIRE, SEE ELECTRICAL DRAWINGS FOR THE |
| | RECESSED OR SURFACE MOUNTED LUMINAIRE, SEE ELECTRICAL DRAWINGS FOR THE |
| | WALL MOUNTED LUMINAIRE, SEE ELECTRICAL DRAWINGS FOR THE (AUDITORIUM) |
| | 2-INCH FIRE RATED CEILING ABOVE FUNCTIONAL ROOM LUMINAIRE, SEE ELECTRICAL DRAWINGS FOR THE |
| | 2-INCH FIRE RATED CEILING ABOVE FUNCTIONAL ROOM LUMINAIRE, SEE ELECTRICAL DRAWINGS FOR THE |
| | SPOT LIGHT SPHERE, SEE MECHANICAL DRAWINGS FOR DUCTING |
| | RECESSED OR SURFACE MOUNTED LUMINAIRE, SEE ELECTRICAL DRAWINGS FOR THE |
| | LUMINAIRE OR SON, CEILING MOUNTED |
| | LUMINAIRE OR SON, CEILING MOUNTED |
| | LUMINAIRE OR SON, CEILING MOUNTED |
| | LUMINAIRE OR SON, CEILING MOUNTED |
| | SPRINKLER HEADS, SEE FIRE PROTECTION DRAWINGS FOR THE |

CEILING MATERIAL KEY

- | | |
|--|---------------|
| | 4'-0" x 4'-0" |
| | 4'-0" x 4'-0" |
| | 6'-0" x 4'-0" |
| | 6'-0" x 4'-0" |
| | 6'-0" x 4'-0" |
| | 6'-0" x 4'-0" |
| | 6'-0" x 4'-0" |
| | 6'-0" x 4'-0" |
| | 6'-0" x 4'-0" |
| | 6'-0" x 4'-0" |
| | 6'-0" x 4'-0" |
| | 6'-0" x 4'-0" |
| | 6'-0" x 4'-0" |
| | 6'-0" x 4'-0" |
| | 6'-0" x 4'-0" |
| | 6'-0" x 4'-0" |

GENERAL NOTES

- GRIPRAIL BOARD CEILING TO BE F7-10 UNLESS OTHERWISE NOTED.
- ALL SPERITS TO BE F7-10 UNLESS OTHERWISE NOTED.
- ACOUSTIC CEILING TILE TO BE ACP-1 UNLESS OTHERWISE NOTED.
- SEE FINISH SCHEDULE FOR ACOUSTIC CEILING PANEL TYPES.
- METALLIC ACCESS PANELS AT CEILING AND WALL LOCATIONS TO SERVE EQUIPMENT WHERE REQUIRED TO MAINTAIN THE SYSTEMS FROM THE SHOP DRAWING REVIEW/REVISION PROCESS. PROVIDE FIRE RATED ACCESS PANELS AT FIRE RATED ASSEMBLY LOCATIONS. SEE ALSO TECHNICAL SPECIFICATIONS SECTION 08311.
- COMPARTMENT CEILING INSTALLATION WITH FOOD SERVICE DRAWINGS