

CLIENT
**TOWN OF SURPSIDE
 COMMUNITY CENTER**
 9301 Collins Avenue, Surfside, Florida 33154

DESIGNER
SPILLS CANDELA DMJM
 800 DOUGLAS ENTRANCE, SUITE 200
 CORAL GABLES, FL 33134
 T: 305-444-6668
 www.spillscondeladmj.com
 FLORIDA LICENSE AA0003298

CONSULTANTS
 LANDSCAPE ARCHITECTURE
SAVINO & MILLER DESIGN STUDIO
 1245 NE 5TH AVENUE, MIAMI, FLORIDA 33136
 TEL: (305) 897-9927 FAX: (305) 897-9923
 ESTIMATING CONSULTANT
ONS CONTRACTING/WEEDING SERVICES
 91 BIRNEY DRIVE, SUITE 301, DEERFIELD BEACH, FL 33441
 TEL: (561) 491-1811 FAX: (561) 497-3192
COASTAL CONSTRUCTION
 7465 SW 27TH AVENUE, MIAMI, FLORIDA 33156
 TEL: (305) 898-8100 FAX: (305) 898-4980
FOOD SERVICES CONSULTANT
STRAS DESIGN INTERNATIONAL
 1500 N.W. 10TH AVENUE, SUITE 200, MIAMI, FLORIDA 33136
 TEL: (305) 315-3555 FAX: (305) 726-3013
POOL CONSULTANT
AQUADYNAMICS, INC.
 5000 SW 25TH AVE. SUITE 202, MIAMI, FLORIDA 33155
 TEL: (305) 667-8875 FAX: (305) 662-0022
LEED CONSULTANT
SPINNAKER GROUP, INC.
 501 SPINNAKER, WESTON, FL 33326
 TEL: (954) 347-0867 FAX: (954) 217-3814

REGISTRATION
 PROFESSIONAL OF RECORD: E. RIVERO, P.E.
 DISCIPLINE: ELECTRICAL ENGINEERING
 REGISTRATION NO.: 42709

ISSUE

1	01-29-10	DRY REVIEW COMMENTS
2	03-01-10	DRY REVIEW COMMENTS

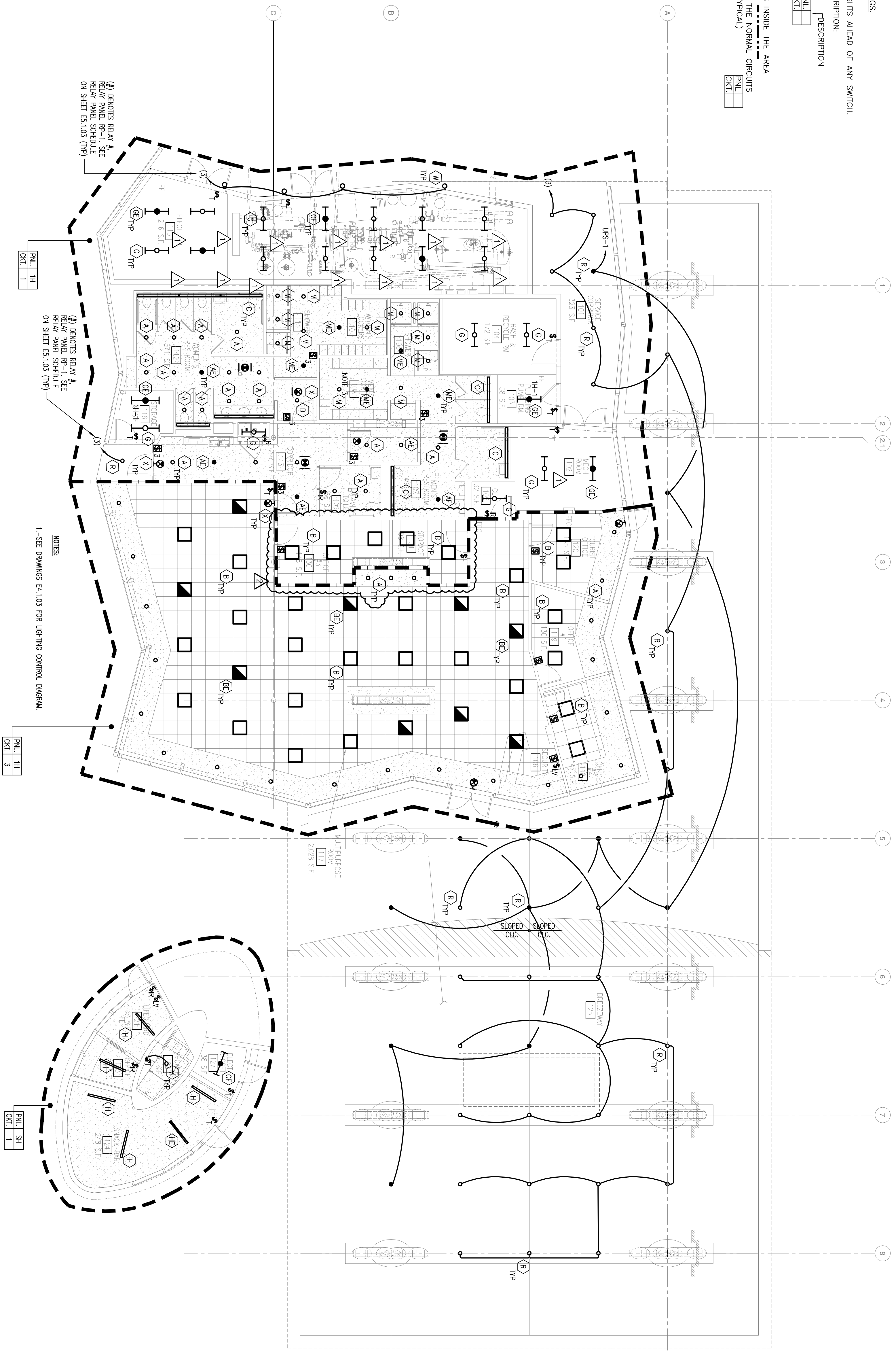
MARK	DATE	DESCRIPTION
PROJECT NO:		60028604
DRAWN BY:		
CHECKED BY:		
DATE:		10-22-2009
KEY PLAN		

SHEET TITLE
**GROUND FLOOR
 LIGHTING PLAN**

E2.3.01

NOTES: LIGHTING DRAWINGS.
 1. CONNECT ALL EXIT LIGHTS AHEAD OF ANY SWITCH.
 2. TYPICAL CIRCUIT DESCRIPTION:
 PANEL: _____
 CORRESPONDING: _____
 CIRCUIT: _____

ALL LIGHTING FIXTURES INSIDE THE AREA
 DELIMITED BY LINES TO THE NORMAL CIRCUITS
 NOT CONNECTED TO THE NORMAL CIRCUITS
 INDICATED IN USUAL (TYPICAL) _____



NOTES:
 1.-SEE DRAWINGS E4.1.03 FOR LIGHTING CONTROL DIAGRAM

(I) DENOTES RELAY #1
 RELAY PANEL SCHEDULE
 ON SHEET E4.1.03 (TYP)

(J) DENOTES RELAY #2
 RELAY PANEL SCHEDULE
 ON SHEET E4.1.03 (TYP)

1 | GROUND FLOOR LIGHTING PLAN
 1/8" = 1'-0"

