



DESIGNER

SPILLIS CANDELA DMJM

800 DOUGLAS ENTRANCE, SUITE 200
CORAL GABLES, FL 33134
T: 305-444-4691 F: 305-447-3580
www.spilliscandeladmj.com

FLORIDA LICENSE AA0003298

CONSULTANTS

LANDSCAPE ARCHITECTURE

SAVINO & MILLER DESIGN STUDIO

12345 NE 6TH AVENUE, MIAMI, FLORIDA 33161

Tel: (305) 882-9082 Fax: (305) 885-9083

ESTIMATING CONSULTANT

CMS CONSTRUCTION MANAGEMENT SERVICES

10 PARKWAY DRIVE, SUITE 301, BEVERLY BEACH, FL 33411

Tel: (854) 481-1811 Fax: (854) 427-3142

COASTAL CONSTRUCTION

EDC CORPORATION

2455 SW 27TH AVENUE, MIAMI, FLORIDA 33145

Tel: (305) 858-8100 Fax: (305) 858-4760

FOOD SERVICES CONSULTANT

SYSTEMS DESIGN INTERNATIONAL

110 EAST BROWARD BOULEVARD, FT. LAUDERDALE, FL 33301

Tel: (954) 315-3855 Fax: (954) 208-9018

POOL CONSULTANT

AQUADYNAMICS, INC.

5000 SW 75TH AVE, SUITE 203, MIAMI, FLORIDA 33155

Tel: (305) 667-8975 Fax: (305) 662-1002

LEED CONSULTANT

SPINNAKER GROUP, INC.

501 SPINNAKER, WESTON, FL 33326

Tel: (954) 347-9867 Fax: (954) 217-3814

REGISTRATION

PROFESSIONAL OF RECORD: W. RONALD HUNT

DISCIPLINE: STRUCTURAL ENGINEERING

REGISTRATION NO.: 19689

ISSUE

03-15-10 BUILDING DEPARTMENT COMMENTS

MARK DATE DESCRIPTION

PROJECT NO: 60028604

DRAWN BY: ALEJANDRO

CHECKED BY:

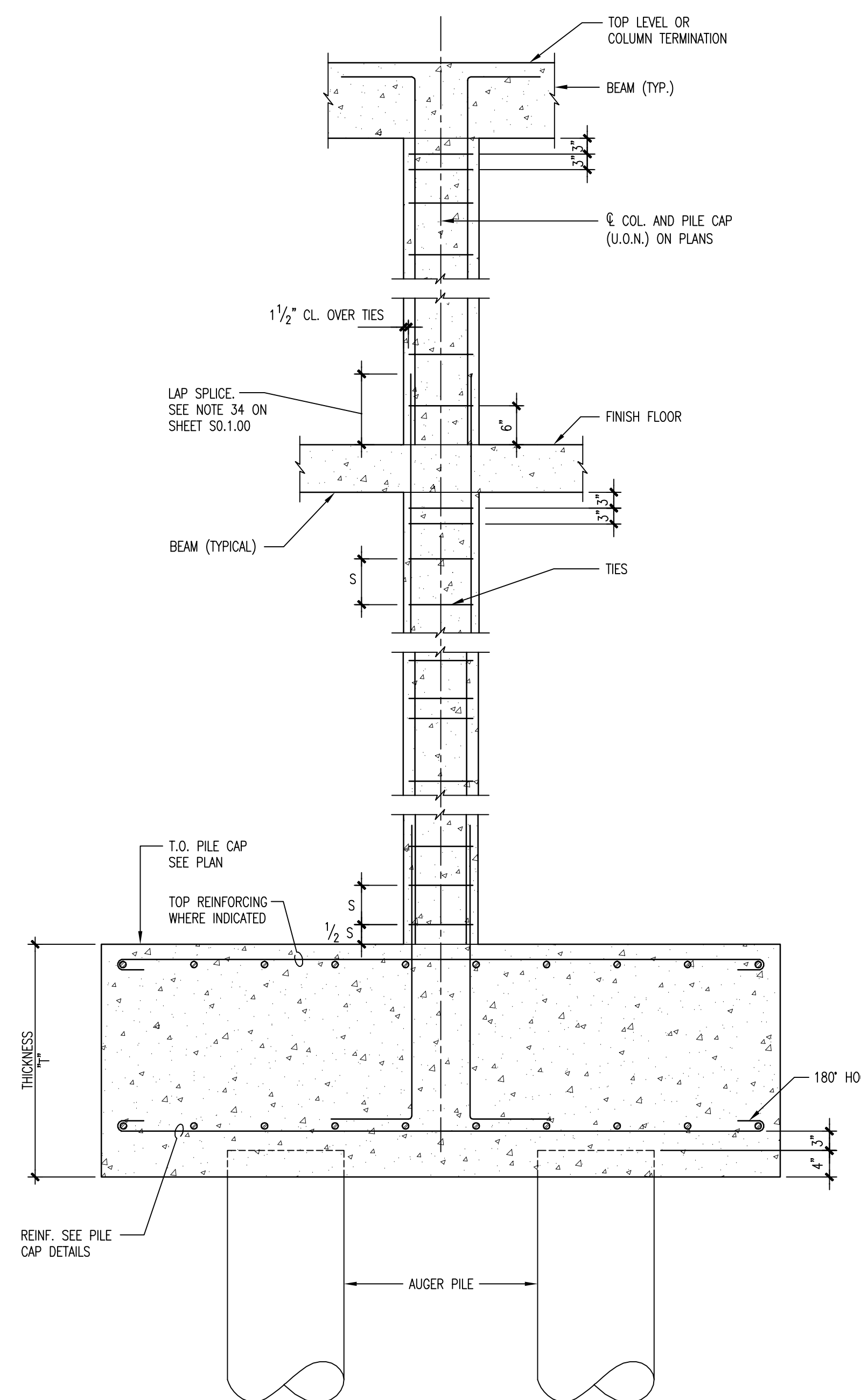
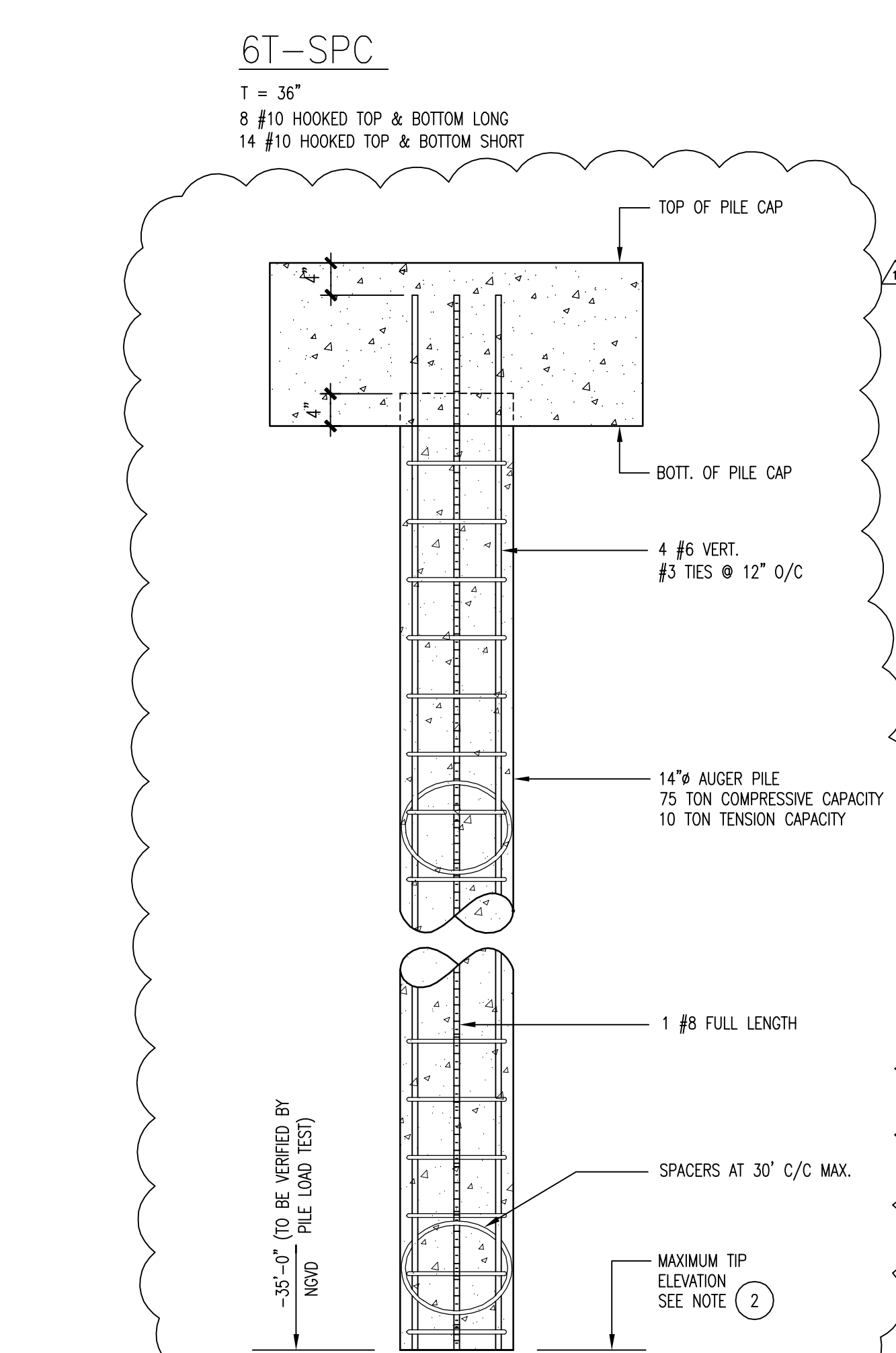
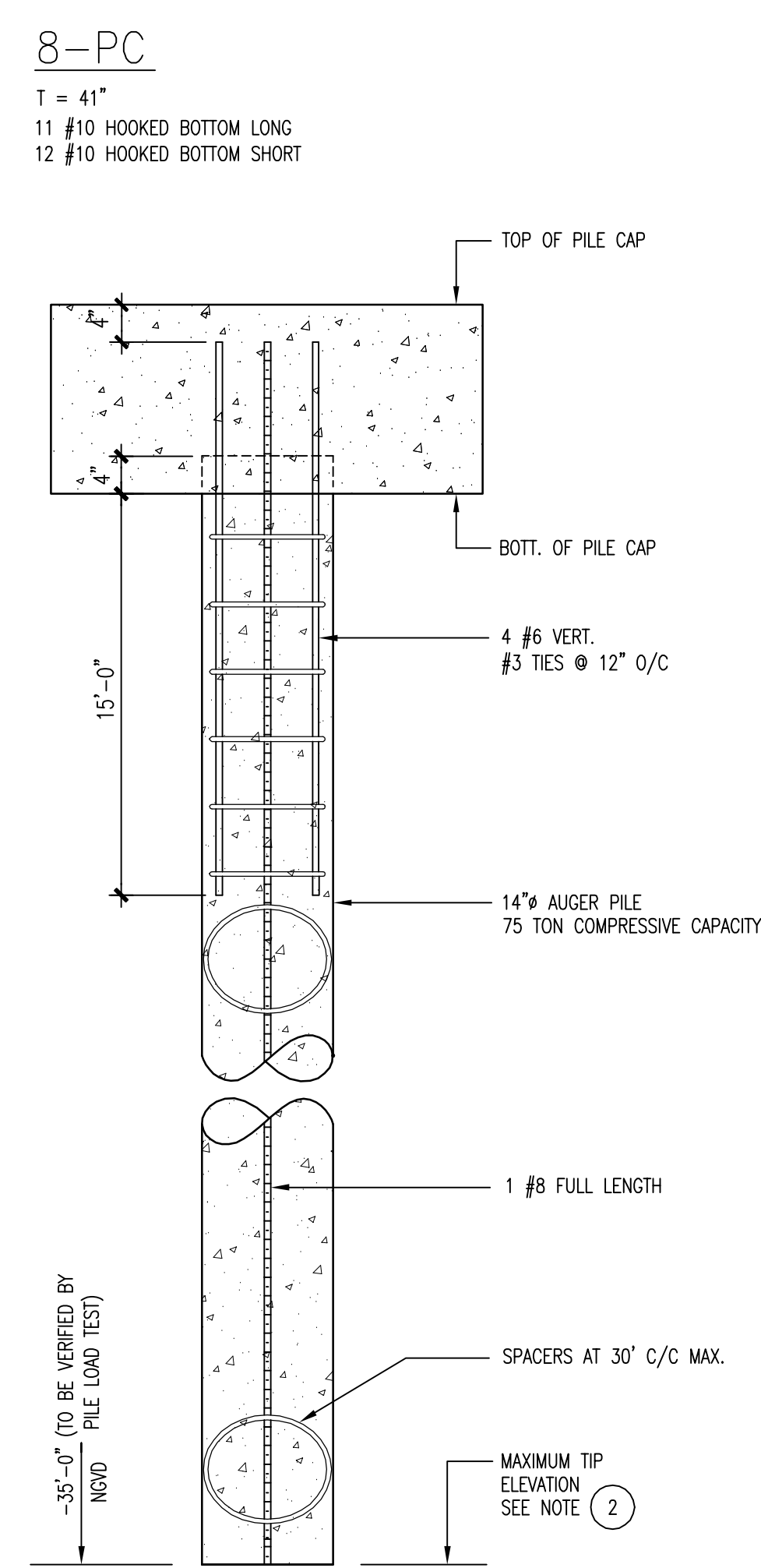
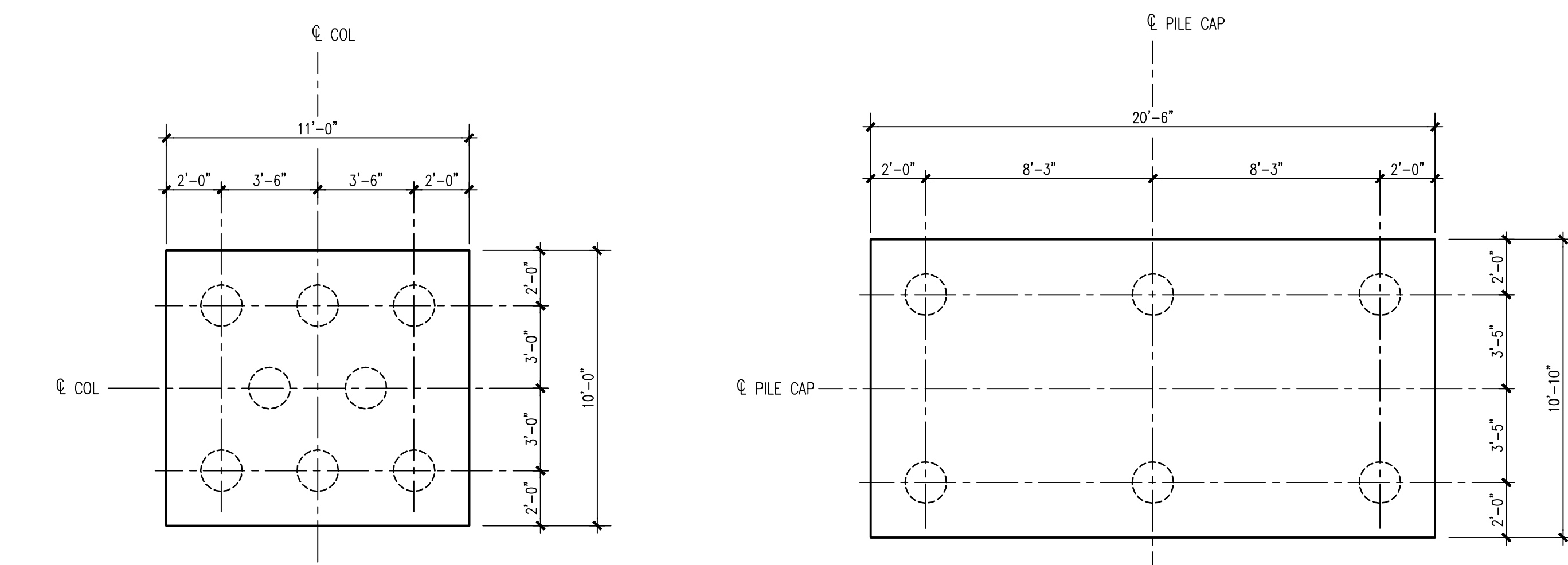
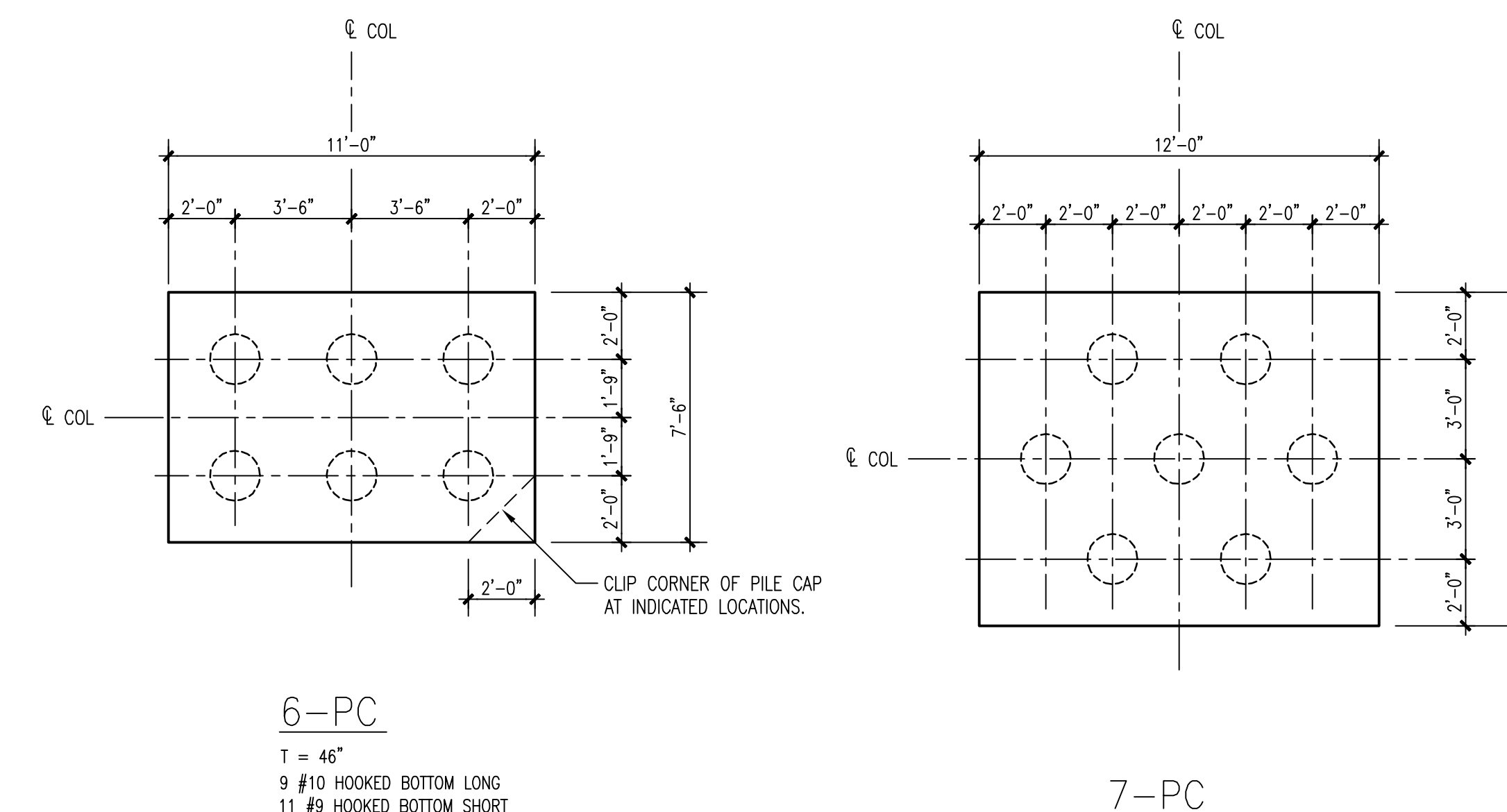
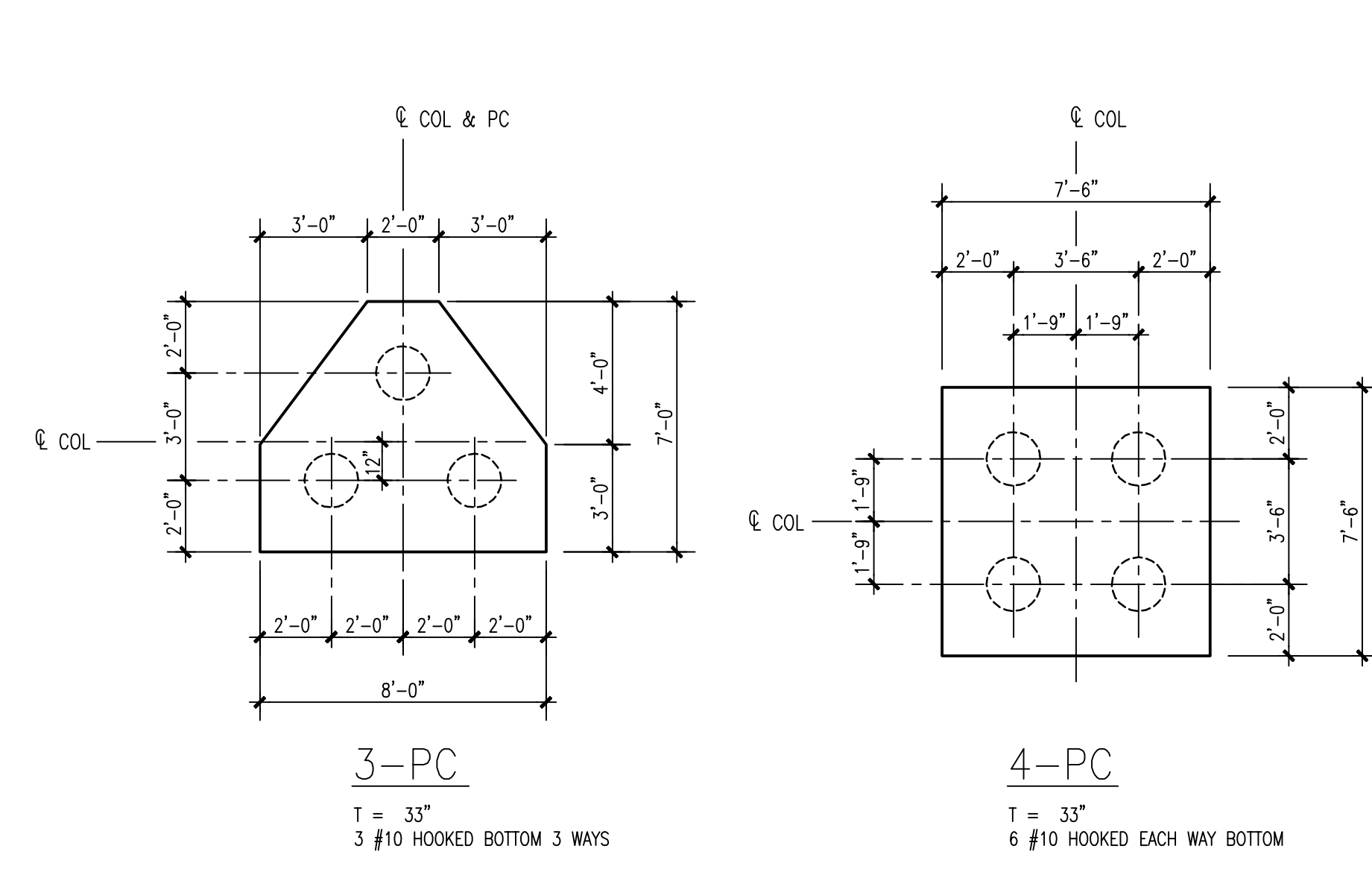
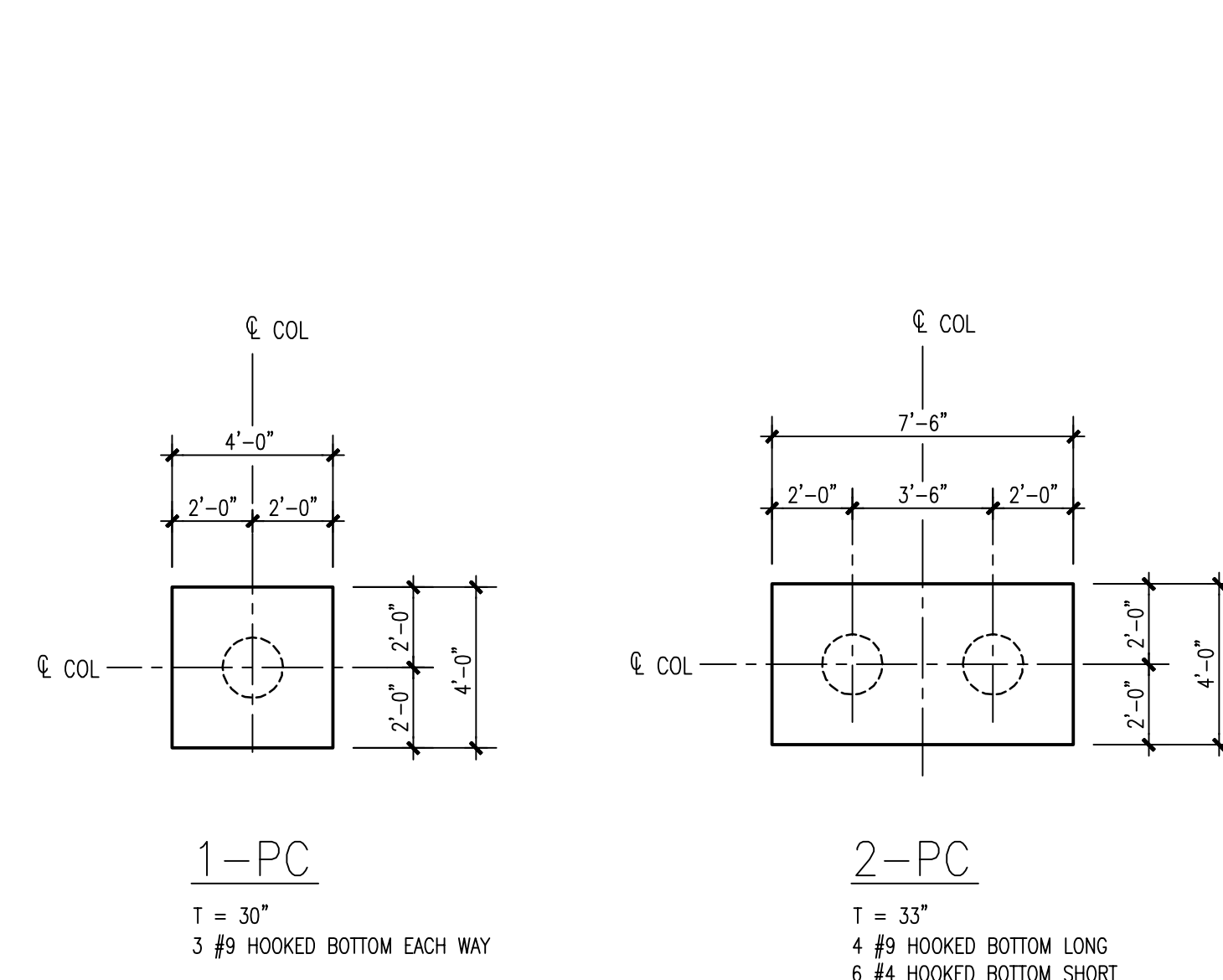
DATE: 10-22-2009

KEY PLAN

SHEET TITLE

FOUNDATION
DETAILS

S3.0.00



TYP. 14" ø AUGERCAST PILE DETAIL (COMPRESSION)
N.T.S. A 3.0.00

TYP. 14" ø AUGERCAST PILE DETAIL (TENSION)
N.T.S. C 3.0.00

COLUMN TO PILE
CAP CONNECTION
SCALE: NTS 1 3.0.00

(NOT USED)

DETAIL 2 3.0.00
SCALE: 3/4"=1'-0"

- NOTES:
- ALL PILES ARE COMPRESSION PILES U.O.N. ON PILE CAP DETAILS.
 - PILE TIP ELEVATION TO CORRESPOND TO TIP ELEVATION OF PILE LOAD TEST.

MARK	SIZE		REINFORCING		#3 U.O.N.		REMARKS
	W	D	TOP	BOTTOM	No.	STIRRUPS	
GB-1	24"	16"	4 #9	3 #9	3	Ø 6" O.C.	
GB-2	24"	16"	2 #7	2 #7	3	Ø 6" O.C.	
GB-3	18"	24"	2 #8	6 #9*	3	Ø 6" O.C.	*4 BARS @ BOTT. LAYER AND (2) AT 2nd LAYER
GB-4	12"	24"	2 #7	2 #7	3	Ø 10" O.C.	
GB-5	24"	24"	2 #8	5 #9	3	Ø 10" O.C.	
GB-6	24"	24"	4 #8	4 #8	3	Ø 6" O.C.	SEE SECTION 5/S3.0.03
GB-7	18"	24"	2 #6	3 #8	3	Ø 6" O.C.	
GB-8	24"	24"	4 #8	3 #8	3	Ø 10" O.C.	
GB-9	36"	24"	6 #8	5 #8	(2) #3	Ø 6" O.C.	
GB-10	24"	24"	3 #8	3 #8	3	Ø 10" O.C.	
GB-11	24"	22 1/2"	4 #8	4 #8	3	Ø 6" O.C.	SEE SECTION 5/S3.0.03