

Town of Surfside  
9293 Harding Avenue  
Surfside, FL 33154

**Surfside Memorial Committee  
Meeting Notes  
February 28, 2023**

1. Call to Order/Roll Call
  - a. CTS Memorial Committee Members in Attendance:
    - i. Chana Wasserman
    - ii. Raquel Oliveira
    - iii. Martin Langesfeld
  - b. Miami-Dade County Staff in Attendance:
    - i. Tomas Alcala, Intergovernmental Affairs
    - ii. Rachel Johnson, Mayor's Deputy Chief of Staff
    - iii. Charles Cyrille, Senior Advisor of Resiliency & Domestic Preparedness
    - iv. Melonie Burke, Intergovernmental Affairs
  - c. Town Elected Officials and Staff in Attendance:
    - i. Shlomo Danzinger, Mayor
    - ii. Hector Gomez, Acting Town Manager
    - iii. Judith Frankel, Town Planner
    - iv. Frank Trigueros, Tourism and Public Communications Director
    - v. Kristina Brown, Grants Consultant & Special Projects Support
2. Introduction
  - a. Welcome and invitation to the committee members to have a seat at the table to engage.
  - b. Members and County representatives on Zoom will also be engaged to support with bouncing ideas throughout the meeting and to assist with answering questions that may arise.
3. Purpose of Surfside Memorial Committee
  - a. The Town Commission assembled this Town Manager's Committee, which is

meant to serve as a recommending body to find a voice for the stakeholders, as we, the Town Administration, and the Town Commission, embark on getting a final, physical memorial created. We bring everyone to the table to gather input and feedback to help with the process of developing the Memorial.

#### 4. Pathway to Committee (Attached)

- a. Where do we start, we don't just start building. We need to find an architect, artist, a team that will lead this process from the professional services standpoint. We are going to start preparing a Request for Qualifications (RFQ) package that will include criteria/parameters that will help guide the design team on the development of a concept for the memorial. We will go into ideas for the criteria further along in this meeting during the PowerPoint presentation we will share.
- b. The Town Manager will start the process to close that local roadway. The Town does have some influence over this area; however, we must always accommodate some driveway access for the existing and future buildings along 88th Street as well as accommodate some fire use. Once we have made these accommodations then we can close the street to the beach.
  - i. The future building is going to require some driveway/approach access. Of course the farther west the driveway entrance is the more space we will have on 88th Street for the memorial site. On 88th Street we can only imagine that the future building will require parking at the basement level or up level so a ramp will most likely be required. We will do all we can within our abilities to limit the kind of use they have so they can have a driveway with the least impact to us.
  - ii. On the 87th Terr., park side, the driveways appear to be on the front, committee members want to understand how that was possible for that side? Town administration is not familiar with the set-up, however, assumptions can be made since the building on that side is different and the auxiliary entrances appear to be on the back. The Town does not own that portion as the property line for the Town ends on the southside of 8777 where the CTS building was. The south portion belongs to Miami Beach. Buildings can be built without using side streets, but we can't determine yet what the site plan for the new building will reveal to us. We strongly believe that the driveway access will be farther west towards Collins Avenue and 88th Street. The Town is unable to limit the access to private property and FDOT will also have to speak as to what they will and won't allow along on Collins Avenue.
  - iii. The final judgement for the sale of the CTS site did not include language about 88<sup>th</sup> Street and the memorial. The memorial will not have cars drive through it. The Town will work to ensure that there is a pedestrian only section that is substantial, however, we can't make those decisions just now. There will be a process, survey and eventually it will go back before the Commission.
- c. We want to ensure we go through all the steps needed to move this forward, which will eventually not only include an RFQ for a landscape architect, but also a Call for Artists that the Town hopes to engage Miami-Dade County into.
- d. The Town will take the feedback and the vision the members and stakeholders present into the process.
- e. The County may have appropriated additional funding to the project, the County staff will confirm this to the Town Manager. In addition, there are Florida Department of State, Arts & Culture, appropriated funding for this project that

should be spent by 2024, but we can request an extension if needed. There is a process for that extension request.

## 5. Criteria for Memorial

- a. Presentation on PowerPoint will be shared during this section of the meeting.
- b. What are the objectives of this presentation? The Town would like to begin identifying the message the Memorial will convey and then to determine the elements that will achieve this. Overall, we need parameters to assist the design team.
- c. Memorial site is still under determination, but we have a general idea that we know will be up to the hard pack. There is a lot we can do in this area including incorporating the landscaping of the dunes.
- d. Feelings and Emotions
  - i. When doing research on other memorials, the Town was looking to identify feelings and emotions conveyed. On this slide there is a list of words that communicate emotions and feelings, which words does the committee identify the most with.
  - ii. As per members of the committee: Happiness is not a word we should be using to communicate emotions and feelings about the Memorial. Members wanted to convey feelings of honesty, truth, what truly happened, peace, serenity, and a moment of reflection for the families.
- e. Community and Cultural Elements
  - i. As per members of the committee: Names need to be included, as well as, dates of birth, some information about the person, a digital component would be great.
    1. Example: the Miami Herald had a 3D of the events of June 24<sup>th</sup>.
    2. Each person's story must be told.
    3. Religious messaging if added needs to also account for nonreligious beliefs.
  - ii. Committee member mentioned artists' that focus on memories of cities, of places, that do not exist anymore, there are artists that can do this.
- f. Natural Elements
  - i. As per members of the committee: We should definitely include natural elements such as milkweeds, planting of trees, water movement (example: 9/11 Memorial), and possibly consider life cycles represented through pathways.
- g. Memorial Materials
  - i. Comments reserved for recovered materials section of the presentation.
- h. Recovered Material
  - i. There is material that has been recovered to include entangled rebar and wires/cables. A lot of material cannot be used due to environmental reasons and restrictions.
  - ii. Committee members would like to have the contacts of the individuals that make the decision on what recovered material can be kept so they can explain what they want to keep and share the information with the future

selected artist.

- iii. County representative mentions that County employee, Charles Cyrille, is the point of contact. County representative also confirms at this time that \$250,000 was in fact allocated by the County for the Memorial. A grant agreement will be executed with Surfside.

i. Physical Structures

- i. Committee members are interested in structures that represent an interest and a large focal point. One member mentioned if corporations fund it they wouldn't be offended if donors wanted to represent their names, but how this is done is important and needs to be sensitive.
- ii. Committee members also mentioned columns, glass, overhead covers, and barriers to separate beach goers from the Memorial side. Pillars with a pathway to the beach with lighting, rubble and rebar displayed. Maybe use some of the ceramic that is still at the site. Seating with lighting on it or under it would be great.

j. Call for Artists

- i. The Town is seeking to do an RFP first to secure a landscape architect, but afterwards a Call for Artists will likely occur to find an artist to develop the unique focal point of the Memorial.
- ii. Committee members reiterated that they want a large focal piece something really high, possibly with a beam that stays on for a certain amount of time on the date of the collapse. The visibility of this piece is very important to the Committee and having options on how much people want to engage with the element is also important. Example the Holocaust Memorial has a private, reflective space with open and intimate areas.

k. Images of Memorials and Committee Feedback

- i. Image of walls of names and how they are grouped is important. Currently on the existing wall the people are grouped together by families, but also consider people that were just visiting and didn't have families.
- ii. Committee members reiterated that the Memorial should be visible from Collins Avenue and 88<sup>th</sup> Street and large with lots of natural elements. They do not want any tombstone looking monuments, nothing too low. The committee conveyed, no flags, include movement, allow people to touch it. In addition, they are open to possibly colors similar to what the original building looked like so neutrals, browns, and creams. Water, lighting, pavers, and a pathway from the street to the beach should all be incorporated into the Memorial. Allowing for multiple sections within the Memorial to engage with it is important.
- iii. Mayor pointed out that we need to consider wind tunnel effect between the two buildings that will be there and how fast the wind will be moving through that area.

l. Closing Thoughts

- i. Committee members are thankful for this effort and appreciate the smooth process.
- ii. Town conveyed they look forward to keeping building together. We will survey and keep working through the language for the RFP.

6. 2<sup>nd</sup> Annual Anniversary Event

- a. One committee member mentioned that the anniversary dates should be set forever despite Commission changes. They wanted to know if the Town can ask the developer if we can host the anniversary at the site and possibly start a tradition where the names are read each year.
- b. The Mayor pointed out that if the date falls on the Sabbath this is something to take into consideration since families want to participate. It is also important that we recognize how much work goes into planning this annual event.
- c. Families and committee members expressed that the anniversary event should not be political and should be on the 24<sup>th</sup>.
- d. The Town will accommodate the community to ensure it is inclusive, more intimate, and sustainable. It will be more of a community event. The Town is working to identify the location for the event and will discuss this with the developer.

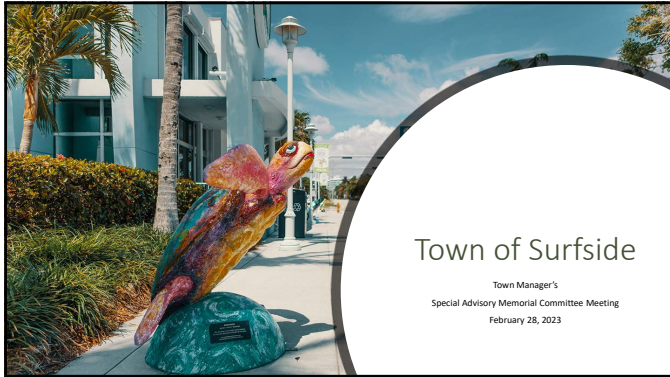
7. Next Meeting

- a. Town Manager confirmed this will be communicated at a later time.

8. Public Comments

- a. Pablo Langesfeld – Would like to know measurements of 88<sup>th</sup> Street.
- b. Town Manager – Confirmed a survey of 88<sup>th</sup> Street is underway and will provide the parameters. In addition, the existing fence will need to be relocated.

9. Meeting Adjourned



1

### Objectives

- Identify the message the Memorial will convey.
- Determine the elements that will convey the message.
- Propose parameters to guide the design.

Example: The message may be one of remembrance and we can accomplish that through a wall of names.

2



### Proposed Space

3

### Surfside Wall of Hope & Memorial

### Feelings and Emotions

- Happiness
- Hope
- Healing
- Reminiscence
- Peace
- Comfort
- Soothing
- Serenity
- Nostalgic

4

## Community and Cultural Elements

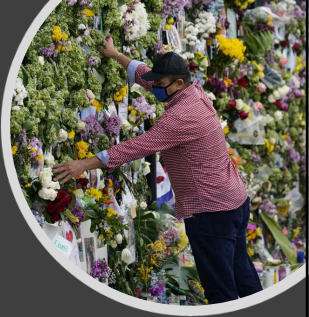
- Names of Victims (Order, Groupings)
- Geographic Places Represented
- Dates or Symbolic Memories
- Quotes, Verses, Sayings
- Religious/Spiritual or Cultural Representations



5

## Natural Elements

- Water Features (Ex: Water fountain)
- Wind Features (Ex: Something that moves)
- Fire Elements (Ex: Lighting that looks like a flame)
- Floral or Tree Features (Ex: Green walls)
- Other Natural Elements




6

## Memorial Materials

- Wood
- Stone
- Concrete
- Pavers
- Onyx
- Metal
- Copper




7



Recovered Material

8



### Physical Structures

- Entrance Structure
- Signage
- Walls
- Separation of Spaces
- Seating
- Lighting
- Walkway

9

## Call for Artists

The Town will work with a landscape architect to conduct a Call for Artists that will create a unique art piece as a culminating element of the Memorial.

Discussion Topics:

- Size and Visibility
- Intimacy or Openness
- Abstract or Conceptual
- Shades, Textures and Colors

10



### Vietnam Veterans Memorial Wall Replica

11

### M.G.R Memorial Complex in Marina Beach, India



- Abstract artistic artwork
- Fencing
- Concrete


12



Memorial 1st US Infantry Division  
Omaha Beach

---

- Benches
- Circular
- Openness
- Pavers
- Tall focal point with names




13

British Memorial on Sword Beach

---

- Flags
- Steps
- Low monuments
- Abstract art piece



14

Haleiwa Beach  
Park War  
Memorial

---

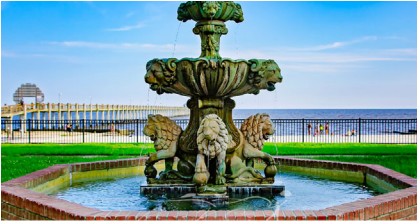


15



The Passage is a pedestrian link between downtown Chattanooga and the Tennessee River and marks the beginning of the Trail of Tears.

16



Sharda Mangal Memorial Fountain at Beach Park in Pascagoula, Mississippi.

17

Holocaust Memorial  
Miami Beach



18

Living  
Memorial in  
Jerusalem



19

Nueces County  
Victims'  
Memorial  
Garden



20



21



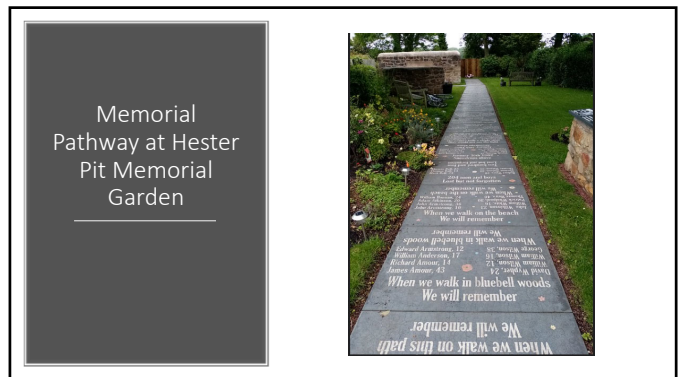
Valor  
Memorial  
Garden

22



Soldiers  
Memorial  
Garden

23



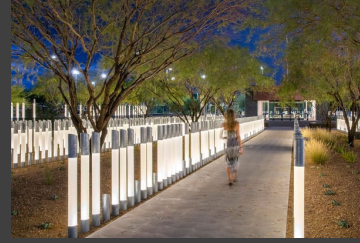
Memorial  
Pathway at Hester  
Pit Memorial  
Garden

24

Memorial Wall  
& Eagle, Ohio  
Veterans'  
Memorial Park



25



Lighted USS  
Arizona  
Memorial  
Gardens at  
Salt River

26

9/11 Memorial



27

Sandy Hook  
Memorial



28

## Closing Thoughts and Next Steps

- Final comments from the Committee.
- Town will do a survey for families and survivors.
- Draft summary to incorporate into the RFQ.