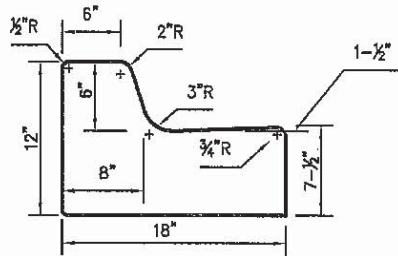
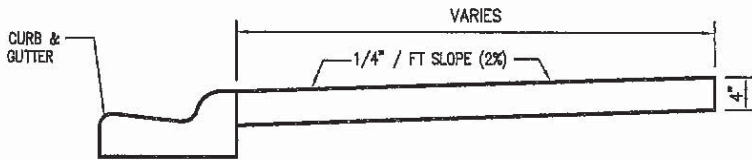


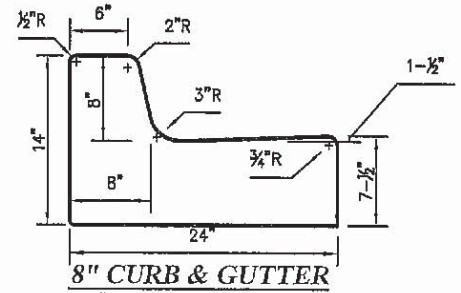
MOUNTABLE CURB & GUTTER



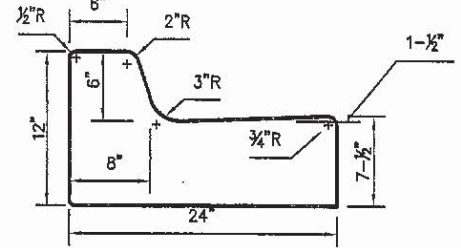
GREEN WAY CURB & GUTTER



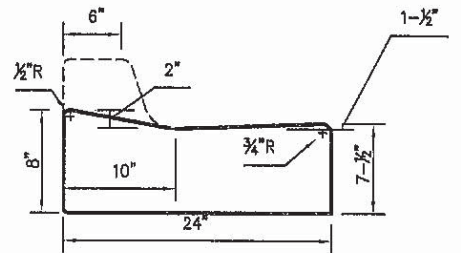
STANDARD CURB, GUTTER & SIDEWALK



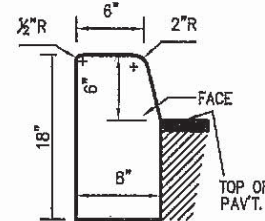
8\"/>



6\"/>

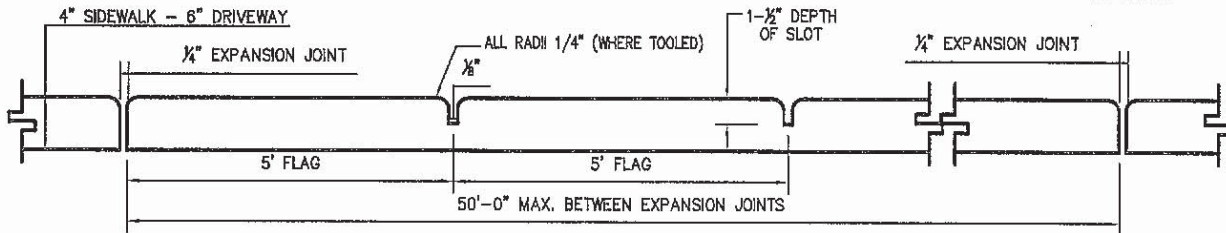


DRIVEWAY CURB & GUTTER



6\"/>

CURB & GUTTER OR CURB SHALL BE CONSTRUCTED IN SECTIONS NOT TO EXCEED 50' IN LENGTH WITH 1/8\"/>



TYPICAL LONGITUDINAL SECTION OF SIDEWALK

NOTE:

- 1.- ALL WORK SHALL COMPLY WITH CITY OF MIAMI STANDARD SPECIFICATIONS, MATERIALS: SEC. 302-1 & METHODS: SEC. 408.
- 2.- SUBGRADE COMPACTED TO 95% DENSITY AASHTO T-99.
- 3.- FOR ADDITIONAL GUTTER SECTIONS, REFER TO FDOT INDEX 300 SERIES.

CURB & GUTTER AND SIDEWALK DETAILS

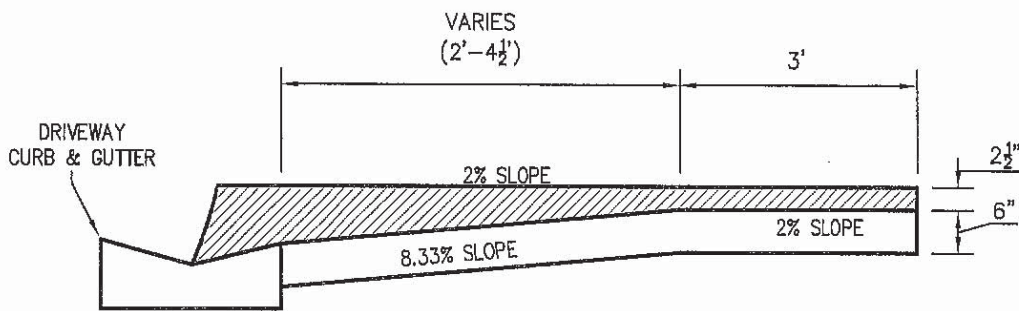
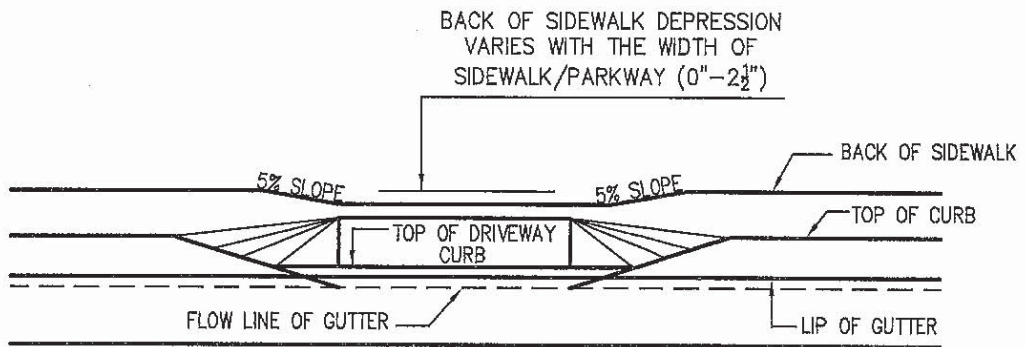
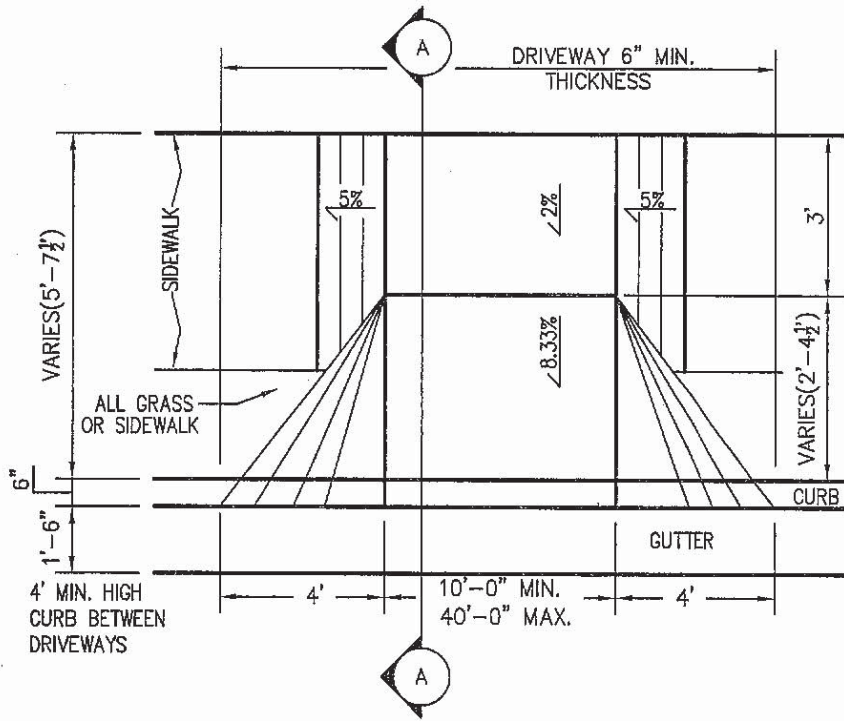
N.T.S.

Oct. 1962

DR: MA
CK:

DEPARTMENT OF PUBLIC WORKS
CITY OF MIAMI, FLORIDA

R-14 MISC. 35-85-22
Sheet 1 of 10



SECTION A-A

**STANDARD DRIVEWAY DETAILS
FOR SIDEWALK/PARKWAY LESS THAN 7'-6" IN WIDTH**

N.T.S.

Nov. 2007

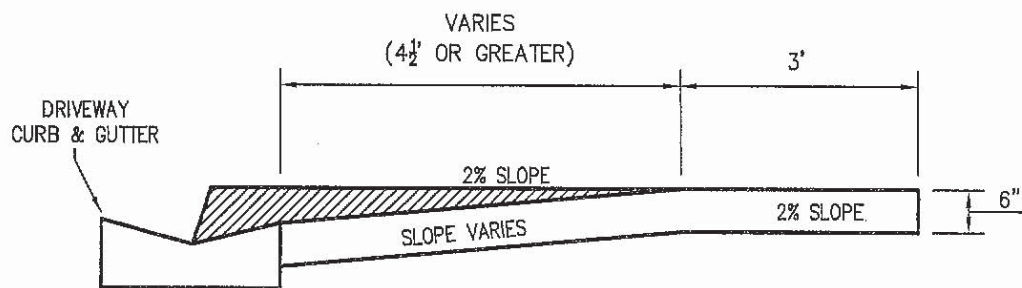
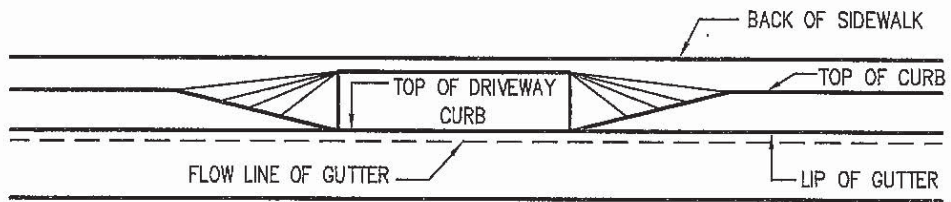
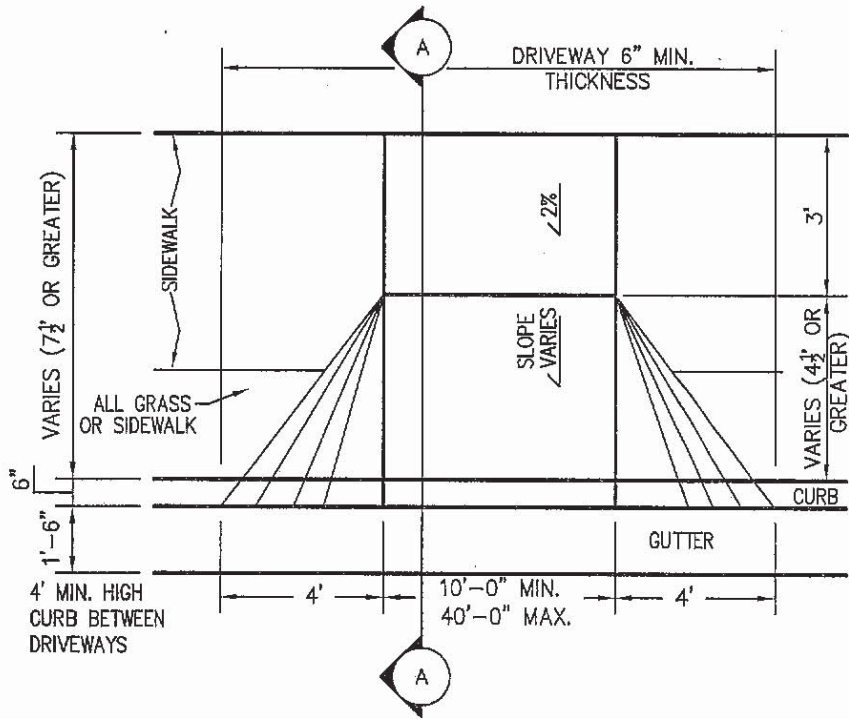
DR: MA

DEPARTMENT OF PUBLIC WORKS
CITY OF MIAMI, FLORIDA

MISC. 35-85-22

CK:

Sheet 2 of 10



SECTION A-A

**STANDARD DRIVEWAY DETAILS FOR
SIDEWALK/PARKWAY GREATER THAN 7'-6" IN WIDTH**

N.T.S.

Nov. 2007

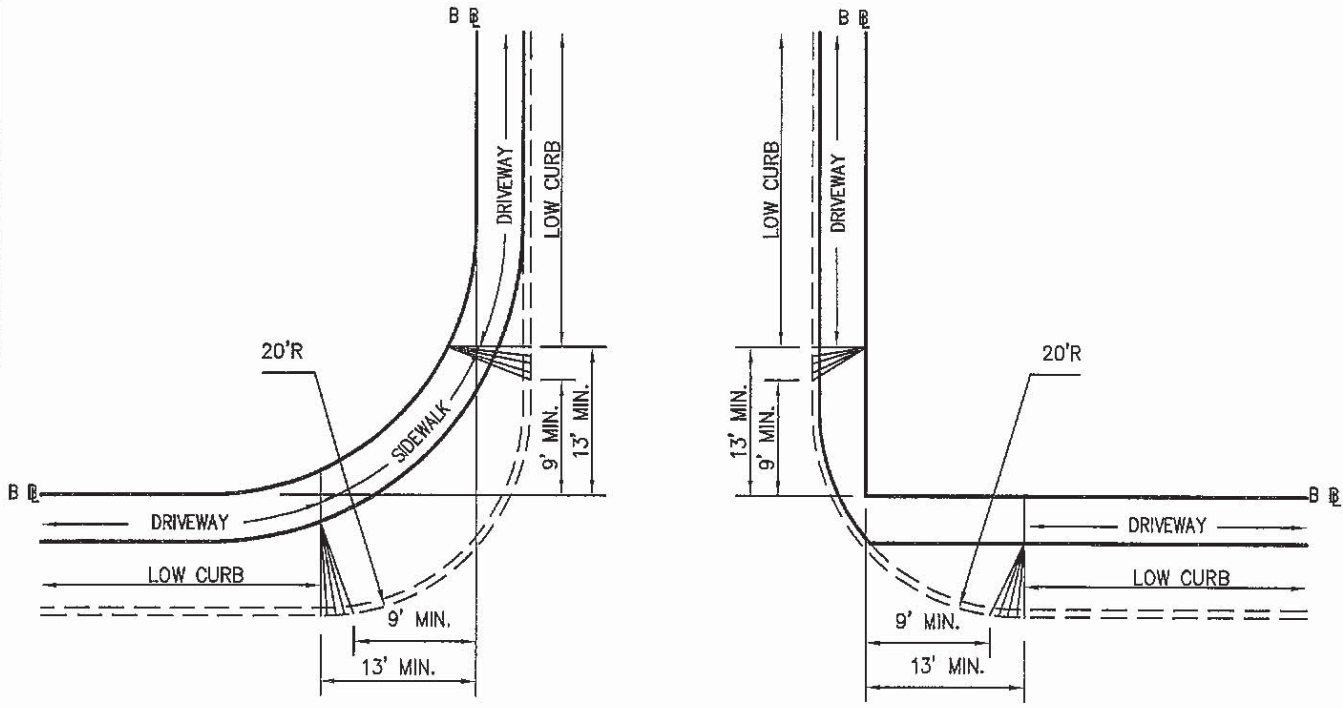
DR: MA

DEPARTMENT OF PUBLIC WORKS
CITY OF MIAMI, FLORIDA

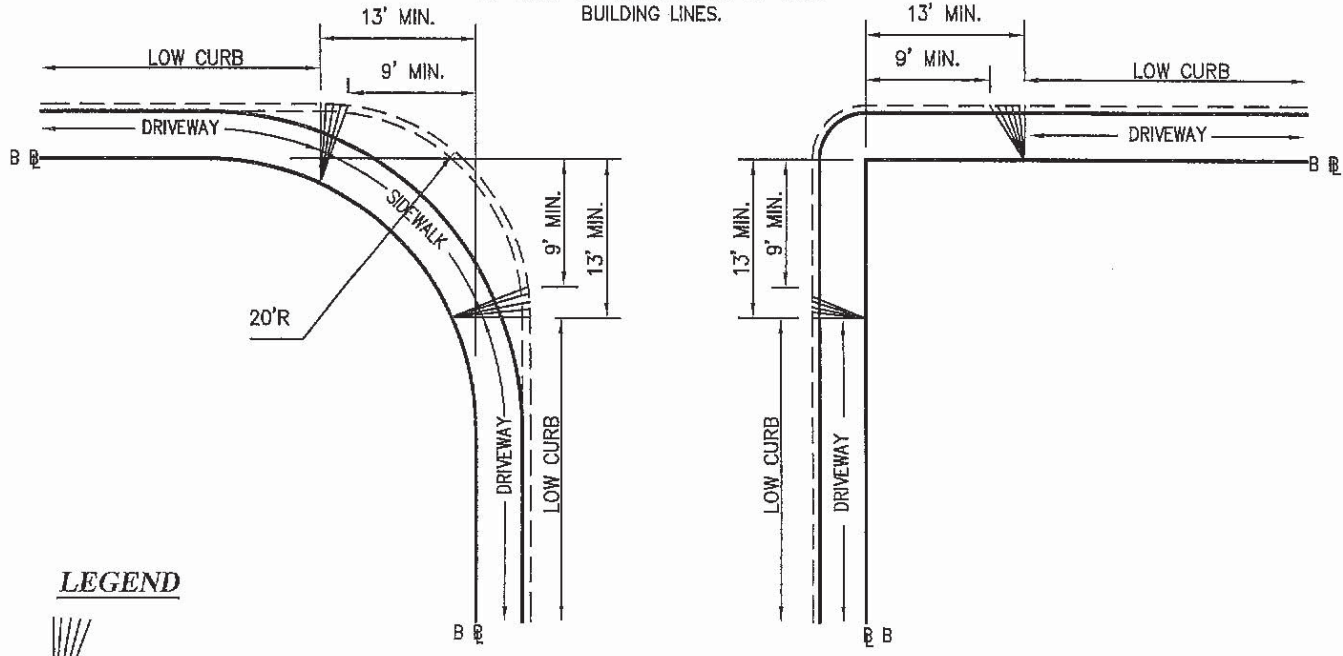
MISC. 35-85-22

CK:

Sheet 3 of 10



NOTE: DRIVEWAYS TO BEGIN A MINIMUM OF 13' FROM THE INTERSECTION OF BASE BUILDING LINES.



LEGEND



STANDARD DRIVEWAY LOCATION AT INTERSECTION DETAILS

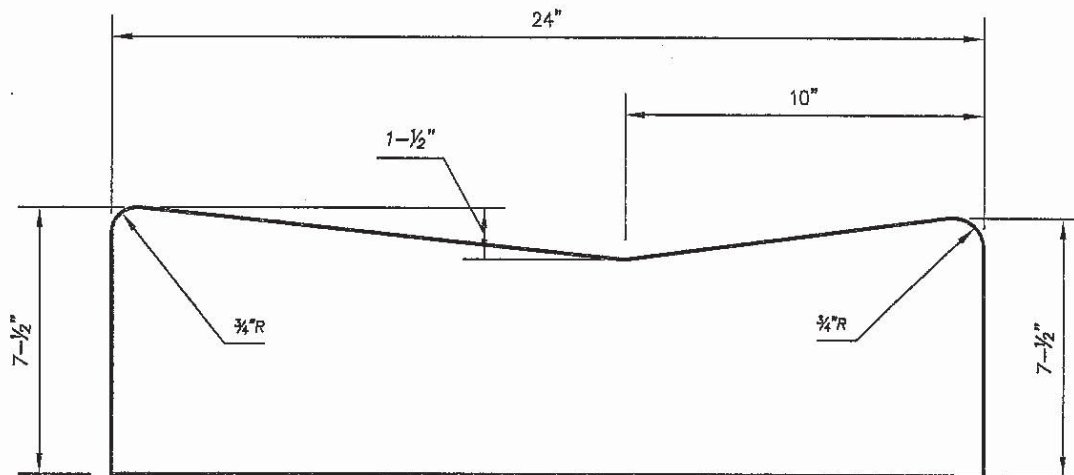
N.T.S.

Jul. 1957

DR: MA
CK:

DEPARTMENT OF PUBLIC WORKS
CITY OF MIAMI, FLORIDA

R-2 MISC. 35-85-22
Sheet 4 of 10



NOTES:

- 1.- ALL WORK SHALL COMPLY WITH CITY OF MIAMI STANDARD SPECIFICATIONS, MATERIALS: SEC. 302-1, AND METHODS: SEC. 408.
- 2.- SUBGRADE SHALL BE COMPACTED TO 95% DENSITY AASHO T-99.
- 3.- VALLEY GUTTER SHALL BE CONSTRUCTED IN 50' MAXIMUM SECTIONS WITH $\frac{1}{8}$ " TO $\frac{1}{4}$ " OPEN EXPANSION JOINT BETWEEN EACH SECTION AND CONTRACTION JOINTS AT 10' INTERVALS.

CONCRETE VALLEY GUTTER

N.T.S.

Oct. 1969

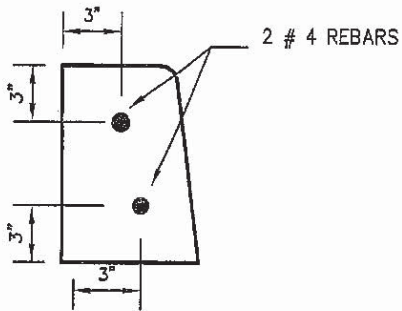
DR: MA

DEPARTMENT OF PUBLIC WORKS
CITY OF MIAMI, FLORIDA

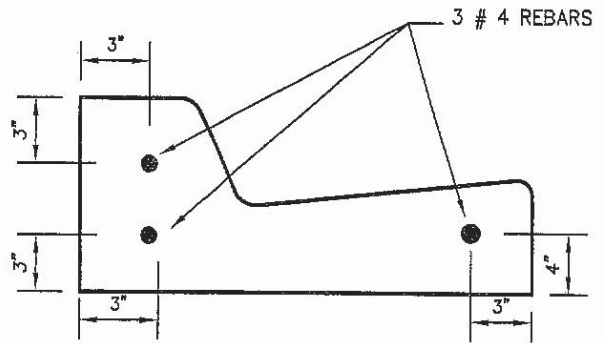
MISC. 35-85-22

CK:

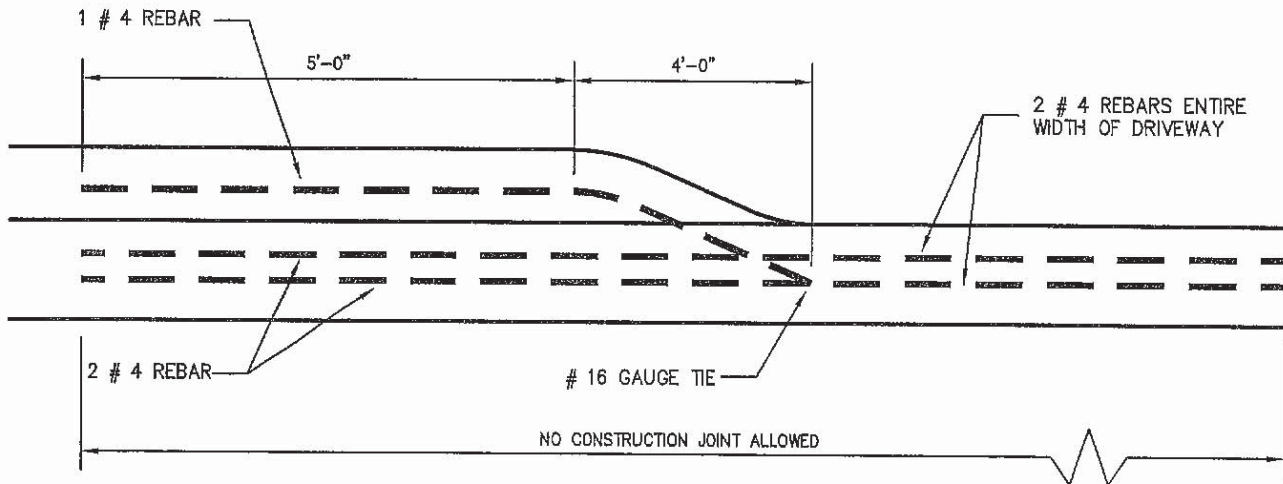
Sheet 5 of 10



**CROSS SECTION
STANDARD 6" CURB**



**CROSS SECTION
STANDARD CURB AND GUTTER**



**CROSS SECTION
TRANSITION TO LOW CURB**

TYPICAL CURB OR CURB AND GUTTER REINFORCING

N.T.S.

DR: MA
CK:

DEPARTMENT OF PUBLIC WORKS
CITY OF MIAMI, FLORIDA

R-1

MISC.35-85-22
Sheet 6 of 10