



**Town of Surfside
Special Town Commission Meeting
AGENDA
June 2, 2021
6 p.m.**

- 1. Opening**
 - A. Call to Order**
 - B. Roll Call of Members**
- 2. Commission Approval Schematic Design of 96th Street Park - Andrew Hyatt, Town Manager**
- 3. Adjournment**

Respectfully submitted,

Andrew Hyatt
Town Manager

THIS MEETING IS OPEN TO THE PUBLIC. IN ACCORDANCE WITH THE AMERICANS WITH DISABILITIES ACT OF 1990, ALL PERSONS THAT ARE DISABLED; WHO NEED SPECIAL ACCOMMODATIONS TO PARTICIPATE IN THIS MEETING BECAUSE OF THAT DISABILITY SHOULD CONTACT THE OFFICE OF THE TOWN CLERK AT 305-861-4863 EXT. 226 NO LATER THAN FOUR DAYS PRIOR TO SUCH PROCEEDING.

IN ACCORDANCE WITH THE PROVISIONS OF SECTION 286.0105, FLORIDA STATUTES, ANYONE WISHING TO APPEAL ANY DECISION MADE BY THE TOWN OF SURFSIDE COMMISSION, WITH RESPECT TO ANY MATTER CONSIDERED AT THIS MEETING OR HEARING, WILL NEED A RECORD OF THE PROCEEDINGS AND FOR SUCH PURPOSE, MAY NEED TO ENSURE THAT A VERBATIM RECORD OF THE PROCEEDINGS IS MADE WHICH RECORD SHALL INCLUDE THE TESTIMONY AND EVIDENCE UPON WHICH THE APPEAL IS TO BE BASED.

AGENDA ITEMS MAY BE VIEWED AT THE OFFICE OF THE TOWN CLERK, TOWN OF SURFSIDE TOWN HALL, 9293 HARDING AVENUE. ANYONE WISHING TO OBTAIN A COPY OF ANY AGENDA ITEM SHOULD CONTACT THE TOWN CLERK AT 305-861-4863. A COMPLETE AGENDA PACKET IS ALSO AVAILABLE ON THE TOWN WEBSITE AT www.townofsurfsidefl.gov.

TWO OR MORE MEMBERS OF OTHER TOWN BOARDS MAY ATTEND THIS MEETING.

THESE MEETINGS MAY BE CONDUCTED BY MEANS OF OR IN CONJUNCTION WITH COMMUNICATIONS MEDIA TECHNOLOGY, SPECIFICALLY, A TELEPHONE CONFERENCE CALL. THE LOCATION 9293 HARDING AVENUE, SURFSIDE, FL 33154, WHICH IS OPEN TO THE PUBLIC, SHALL SERVE AS AN ACCESS POINT FOR SUCH COMMUNICATION.



MEMORANDUM

ITEM NO. 2

To: Honorable Mayor, Vice-Mayor, and Members of the Town Commission
From: Andrew Hyatt, Town Manager
Date: June 2nd, 2021
Subject: Commission Approval Schematic Design of 96th Street Park

On February 12th, 2021 the design firm Savino & Miller Design Studio entered into a contract with the Town of Surfside for the design of the 96th Street Park. On May 5th, 2021, an additional service contract to include the design of a kayak launch on site was executed. To date, the design team has completed Pre-design and Site Analysis tasks and is nearing the end of the Schematic Design phase, which included multiple public outreach events.

Summary of key milestones to date:

- Kickoff Meeting (On-Site): February 3rd, 2021
- Public Outreach 1 (Virtual Presentation): March 3rd, 2021
- Public Outreach 1 (In Person Event): March 15th, 2021
- Parks & Recreation Committee Meeting (Virtual Presentation): April 12th, 2021
- Public Outreach 2 (Virtual Presentation): April 28th, 2021
- Public Outreach 2 (In Person Event): May 2nd, 2021
- Parks & Recreation Committee Meeting (In Person Presentation): May 25th, 2021

After testing multiple iterations of the site plan and incorporating feedback from the Town staff, Parks & Recreation Committee, Commissioners and the Community, two design schemes were presented in the public outreach on April 28th, 2021 and voted on by the community with these major distinguishing features:

Scheme 1: One-story building along the waterfront in the Northwest corner of the site. Kayak launch at the Northwest corner of the site. Playground South of the building along the waterfront.

Scheme 2: Two-story building along the waterfront at the center of the site. Kayak launch at the Southwest corner of the site. Playground North of the building along the waterfront.

Based on feedback from the Town staff, Parks & Recreation Committee, Commissioners and the Community in the second public outreach process, the one-story scheme was revised to include more covered outdoor space and a third scheme was created for presentation to the Parks & Recreation Committee and Town Commission.

Scheme 3: Two-story building along the waterfront in the Northwest corner of the site. Kayak launch at the Northwest corner of the site with room for possible kayak storage behind the building at the launch site. Playground South of the building along the waterfront.

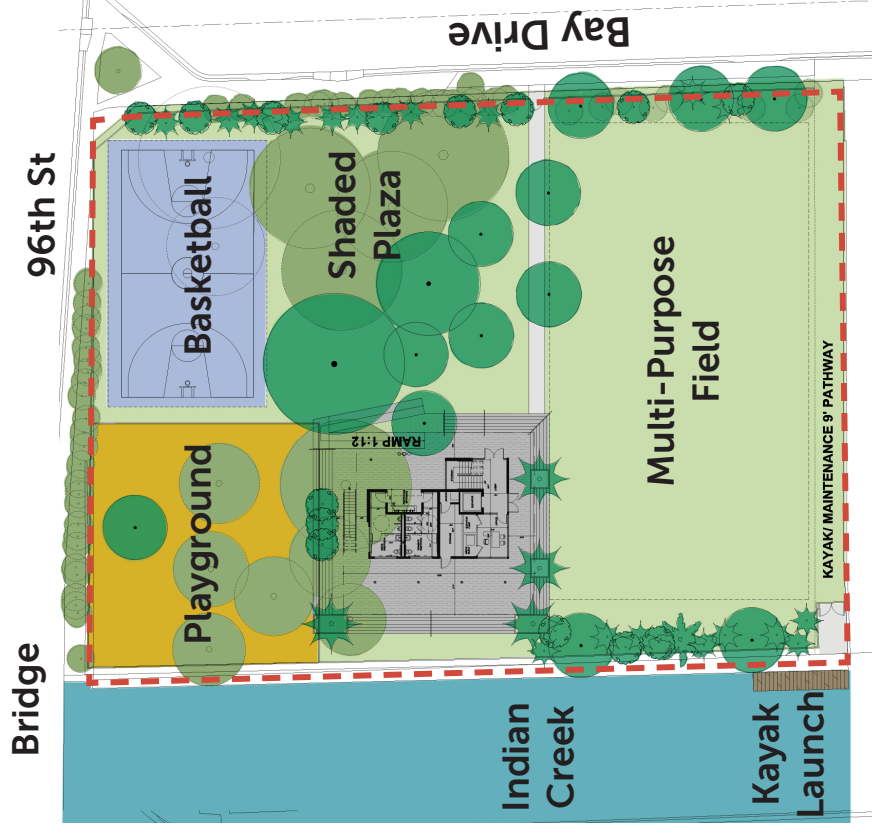
On May 25th, 2021 the Parks and Recreation committee reviewed all three schemes and unanimously recommended that the Commission vote to move forward with the design of Scheme 3.

Town Commission will review the schemes in Special Meeting on June 2nd, 2021. The Town Administration and Savino & Miller Design Studio are seeking approval of a Schematic Design to move forward with Design Development and Construction Documents for 96th Street Park.

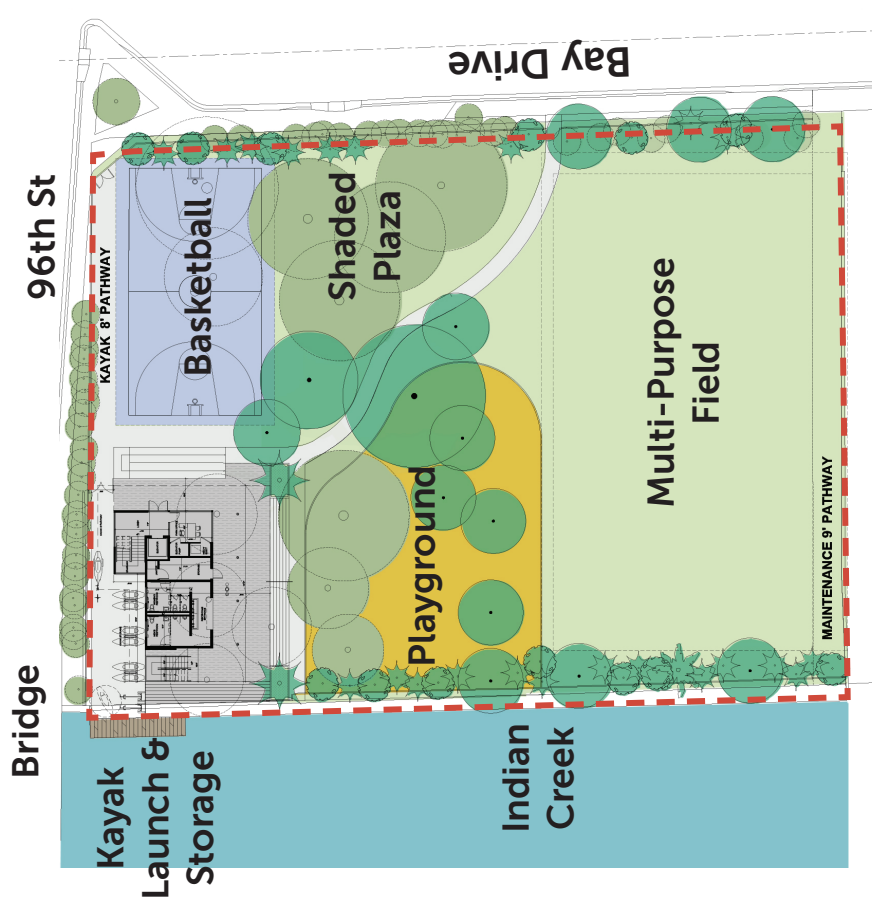
SCHEME 1



SCHEME 2



SCHEME 3



ONE STORY BUILDING



TWO STORY BUILDING A



TWO STORY BUILDING B



PAINTING

EXERCISE

FAMILY
PLAY

SUNSETS

Workshop Report

Community Dialogues 02: Designing 96th Street Park

Hosted by Savino Miller Design Studio, William Lane Architects, + Atelier Mey

May 12, 2021



savinomiller
DESIGN STUDIO

william
lane
architect

Atelier Mey

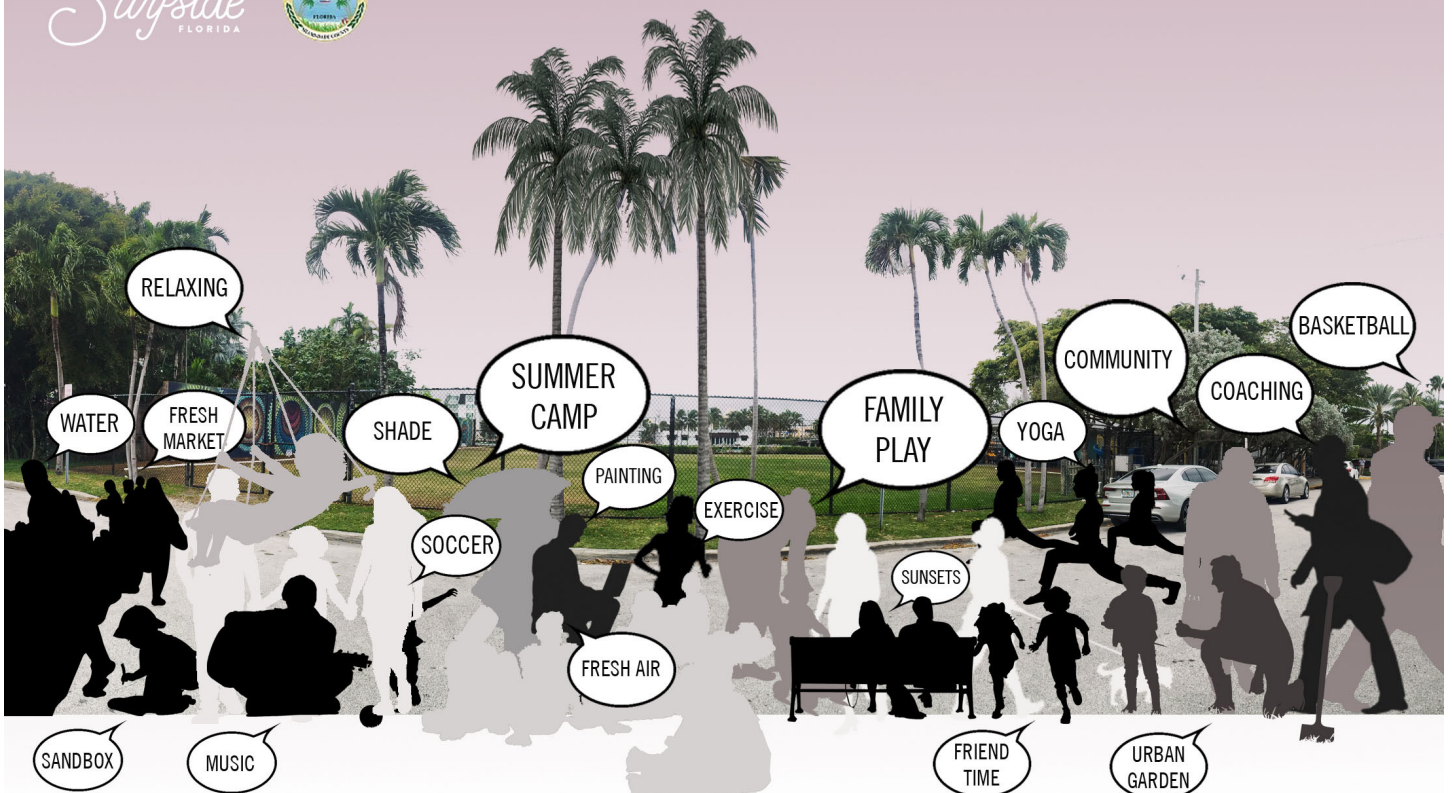
COMMUNITY

TABLE OF CONTENTS

1.0	Community Workshop Presentation	
	1.a Workshop Agenda + Format	05
	1.b Proposed Park Mission Statement	07
	1.c Workshop Team + Shared Project Schedule	09
	1.d Existing Conditions Summary	11
	1.e Community Intake Approaches	17
2.0	Schematic Design Scheme Presentation	
	2.a Scheme 01	20
	2.b Scheme 02	22
3.0	Community Feedback Dialogues	
	3.a 04.28.21 Zoom Meeting	24
	3.b 05.01 Farmer's Market	30
	3.c 04.28-05.08 Survey Monkey	32
4.0	Community Intake Conclusion	
	4.a Preferred Community Design Themes	48
	4.b Kayak Comments + Statistics	53
5.0	Appendix A-04/28 Workshop Meeting Minutes	54

Community Dialogues: Designing 96th Street Park

Surfside
FLORIDA



Follow-Up Community Workshop:
Wednesday 6:00 PM April 28th

JOIN US on ZOOM!
<https://zoom.us/j/98568361700>

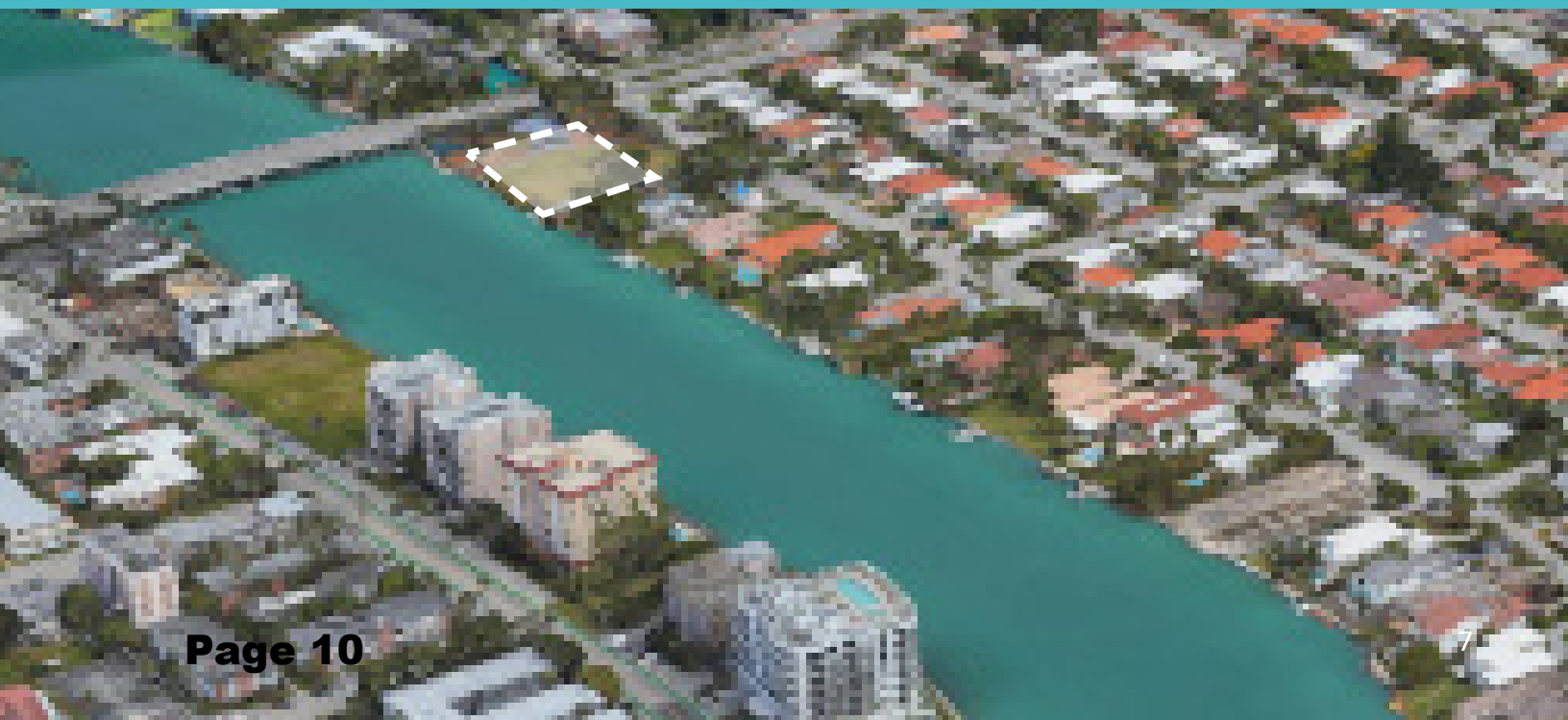
1.a Workshop Agenda

- 01 Review Site Analysis + History
- 02 Share Results from First Community Workshop
- 03 Project Schedule
- 04 Present Schematic Design Schemes
- 05 Summary Community Feedback:
Survey Monkey + Farmers Market



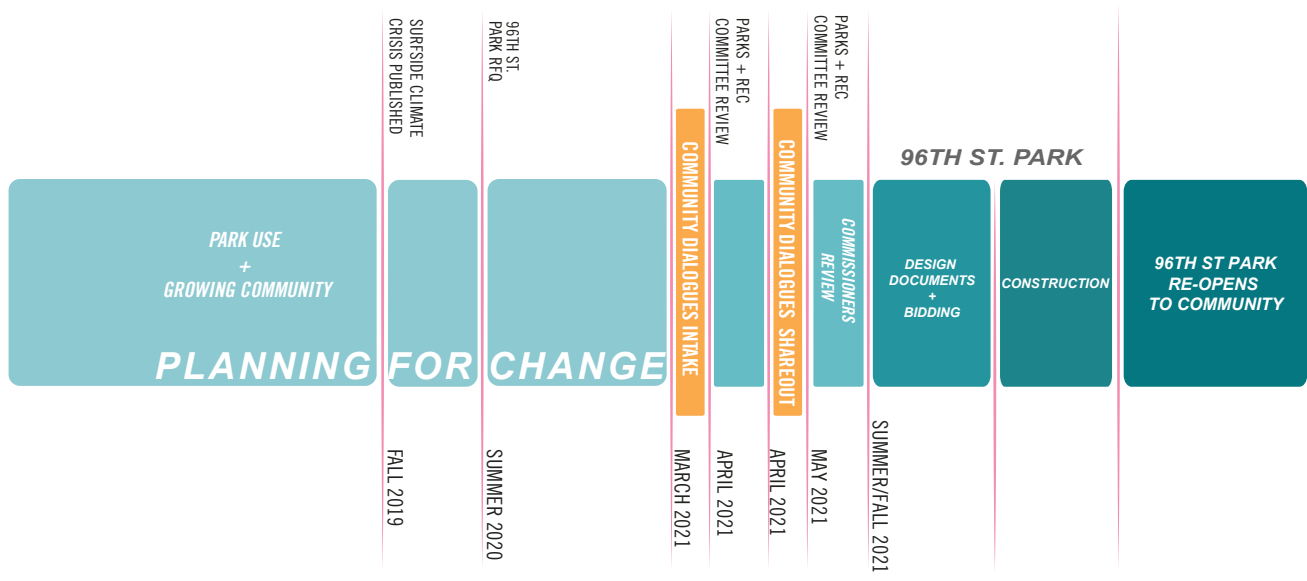
1.b Park Mission Statement

To create a place of natural beauty that reflects the Town of Surfside community and serves as a model for cultural enrichment, ecological stewardship, urban resilience and a place to play!



PROJECT SCHEDULE

**THIS MEETING OBJECTIVE:
HEAR COMMUNITY FEEDBACK TO DATE
SEE SCHEMATIC PLANS
CHOOSE YOUR FAVORITE SCHEME**



1.c TEAM

Community Design Workshop Team:

Adriana Savino	Savino Miller Design Studio [SMDS]
Barry Miller	Savino Miller Design Studio [SMDS]
Kelly Hitzing	Savino Miller Design Studio [SMDS]
Kristelle Boulos	Savino Miller Design Studio [SMDS]
William Lane	William Lane Architect Inc
Carlos Wong	William Lane Archtiect Inc
Christopher Meyer	Atelier Mey [AM]
Shawna Meyer	Atelier Mey [AM]

Surfside Town Project Team:

Andrew Hyatt	Town Manager, Surfside
Jason Greene	Assistant Town Manager, Surfside
Tim Milian	Parks + Rec Director
Malarie Dauginikas	Public Communications Director
Adrian Hernandez	Parks + Rec Superintendent

Surfside Commissioners:

Mayor, Surfside	Charles W. Burkett
Vice Mayor	Tina Paul
Commissioner	Charles Kesl
Commissioner	Eliana Salzhauer
Commissioner	Nelly Velasquez



Park Boundaries

- 1 acre
- \$1.8-2.3 million budget for construction



Zoning

- Business (B)
- Municipal Use (MU)
- Gateway District
- Multiple Family Residential District (RM-1)
- Height Restriction 30ft (H30A)
- Height Restriction 30ft (H30B)

1.d 96th Street Park: Existing Conditions

The 96th Street park is positioned at the north gateway of the Surfside Community on Bay Drive just south of 96th Street. As part of the initial site analysis, the design team evaluated the existing urban conditions, zoning conditions, programmatic services and established challenges and assets as a foundation for community dialogue and schematic design development.



Program

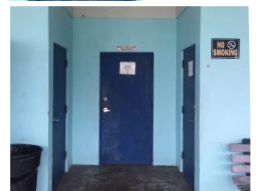
1 Building Facility



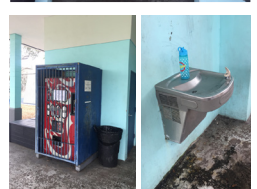
2 Office & Restrooms



3 Storage



4 Vending Machine & Drinking Fountain



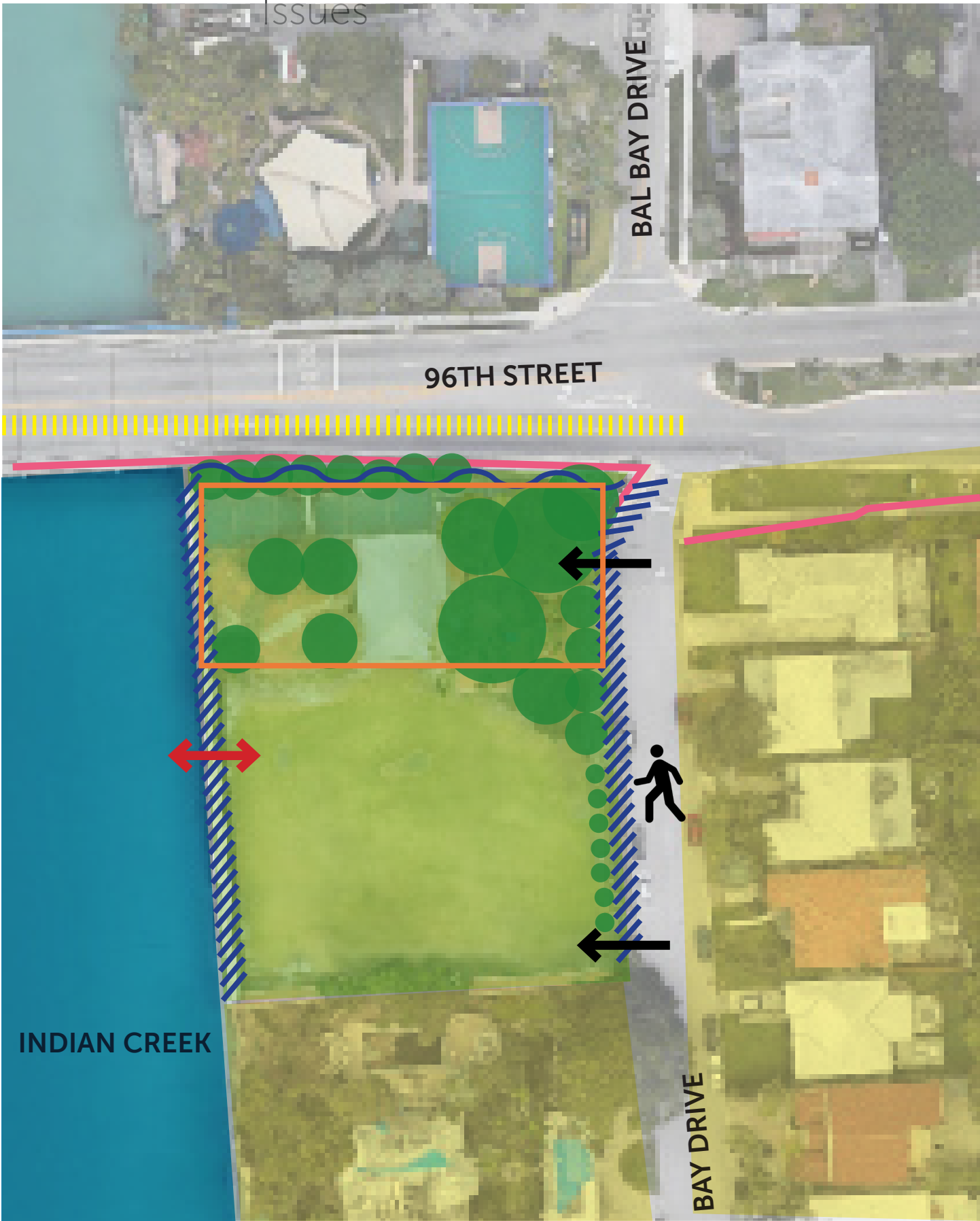


Site Analysis: Challenges













-  Sidewalk discontinues
-  No bike lanes
-  Limited parking
-  Uninviting fencing
-  Inconvenient park entry
-  Spatial disconnection
-  No engagement with the water's edge
-  Drainage issues
-  No indoor program space
-  Hard edge
(no connection to street)
-  Hard edge

SITE ANALYSIS

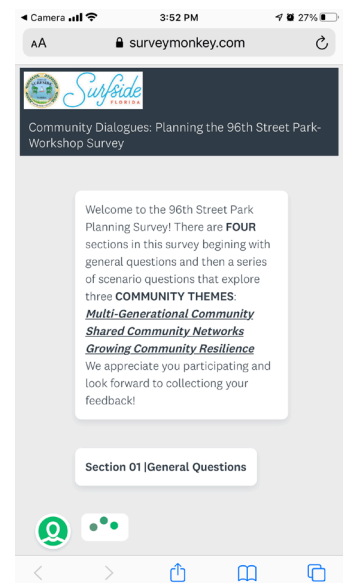
Issues



Site Analysis: Assets

	Residential neighborhood
	Waterfront
	Existing sidewalks connecting to park
	Possible to establish multiple points of access
	1 acre of green space utilized by different age groups
	Trees and palms
	Active edge
	Planted edge
	Bridge that defines space
	Recreational anchor
	Possible waterfront access
	Walking distance within town

Representatives from the Town of Surfside project team attended the Spring's first farmer's market to share the theme boards and encourage community members to complete the Survey.



1.e Community Intake Approach[es]

During the COVID 19 pandemic, we feel now more than ever it is critical to embrace community, gather input, and grow community.

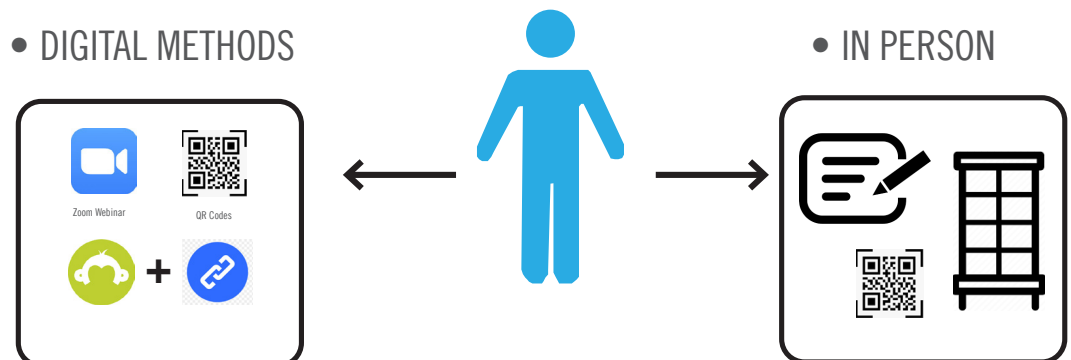
- Two methods of engagement to allow for safe and productive feedback- In Person information gathering and Digital Access
- Both methods will be recorded the same; identical questions and all methods have equal weight in the in-take process.
-

03.03-03.17 Survey Monkey for Establish Design Priorities

The primary mode of remote community intake due to COVID-19 was to utilize Survey Monkey. A 12-15 minute survey was developed to gather community feedback through the lens of the Community.

04.28-05.8 Survey Monkey for Design Feedback

The primary mode of remote community intake due to COVID-19 was to utilize Survey Monkey. A 3 minute survey was developed to gather community feedback on the 2 Schematic Design Schemes.



2. Schematic Design Presentation

Design Dialogues

the objective of the design workshop is to share the community feedback from Design Dialogues 01 where the 96th Street Park design priorities were established through the “*lens of the community*” to best plan the park as a service to the community.

As a result of that community feedback TWO Schematic Designs were developed by the design team under the guidance of the town’s project team and shared with the community.



DESIGN SCHEME -01

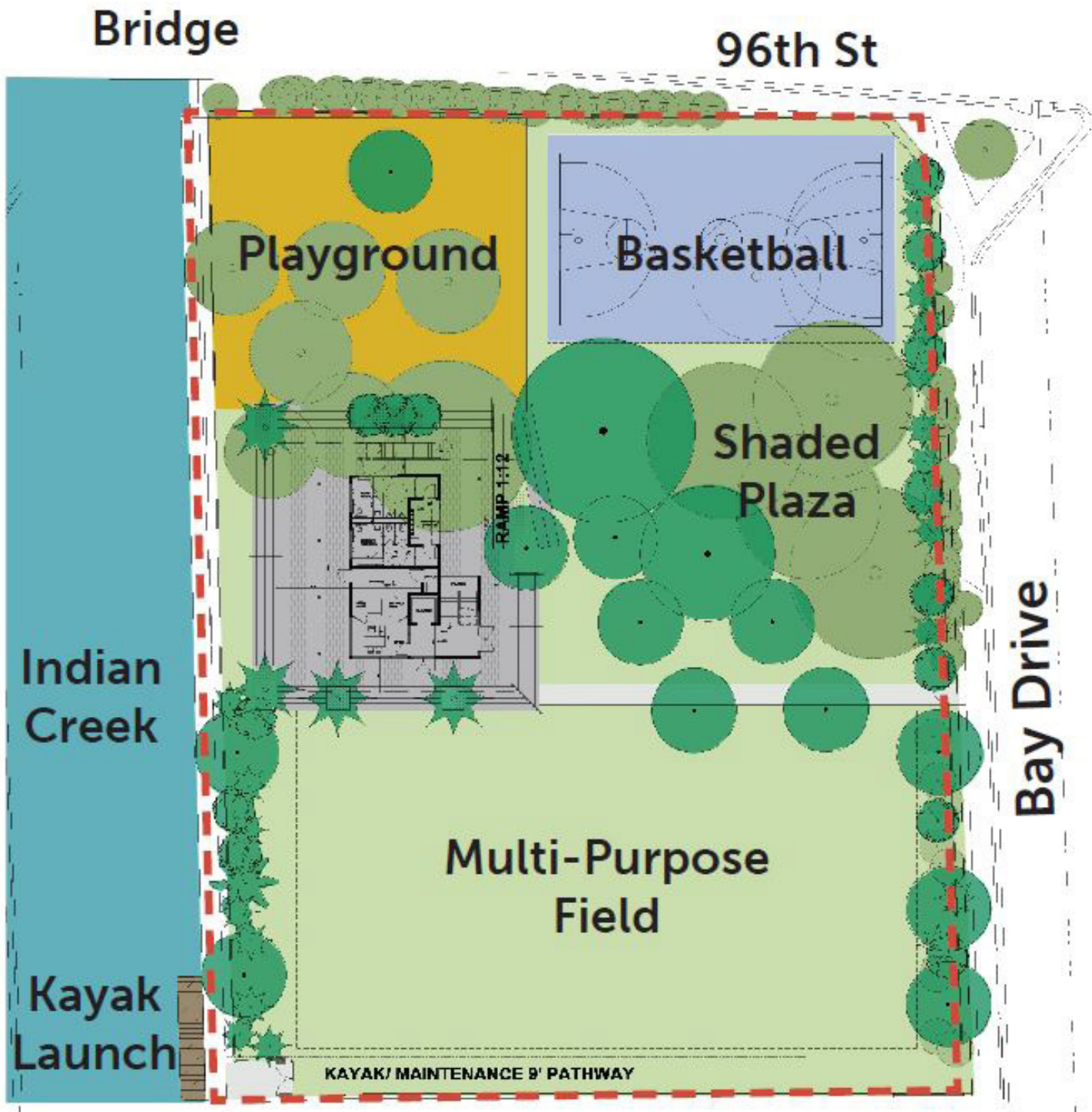
- One-story building along water front in the Northwest Corner
- Shaded Plaza across from toddler + child Playground[s]
- Playground[s] adjacent to Multi-Purpose Field
- Both schemes have the same size basketball court
- Kayak launch in northwest corner

2.a Scheme 01



ONE STORY BUILDING





DESIGN SCHEME -02

- Two-story building along water front in the middle of park
- Shaded Plaza across from recreational building
- Playground[s] adjacent to recreational building and across from basketball court
- both schemes have the same size basketball court
- Kayak launch in southwest corner

2.b Scheme 02

SCHEME 2



TWO STORY BUILDING



SURFSIDE RESIDENTS COMMENTS:

Yael:

- Lives across the street from park.
- Lovely design.
- Everything done to park really affects us.
- Even through it is for the best intentions, the Kayak launch would be devastating for us.
- The park should be only for kids, not for strangers from all over the place, even if it sounds lovely. It is a small community and can't be something we can accommodate.
- One-story building is lovely.

Joshua:

- Lives on Bay Dr.
- One-story building is better, can't see benefits of two-story building. Every time we go to community center we wonder why it has two levels.
- Kayak launch not fair to be based on the survey results because 72% said other locations for kayak launch.
- There is a plan about closing Bay street, so that would be difficult for kayaks.
- In general, not feasible to have the kayak launch at the park, there are so many other places to do it.
- Field: we use entire field for events, how are we going to accommodate multi events/programs occurring at the same time?
- TM: We are maximizing green space and we will continue to host the same events, and run events indoors that previously were done outdoors.
- What will happen to the high school basketball court? Too big for small kids.

Jeff

- Scheme 2 for functionality would be better but next to bridge. During soccer classes, it would be hard to keep an eye on playground and soccer at the same time.
- Active rooftop would be good, not much more to give an access to the roof, why not utilize all the space? For yoga classes etc. Can extend the elevator. Accessibility exception to code with rails for mechanical equipment on top.

3.a Community Feedback I Dialogues

04.28.21 Zoom Meeting

As part of the community input process, a public meeting was held via zoom to inform the community of the park's public design process, the time line, and the methods of engagement. On the adjacent page, the community feedback the was provided during an open comment session has been summarized.

***See town records for full transcript of meeting and recorded meeting video, the bullet points on the left have been summarized for clarity. Additionally, the meeting minutes from the meeting are included as an attachment to this report.*

Andrew:

- Very impressed with both schemes. Beautiful.
- Concern with the increased programing at the park. It is already a parking nightmare with current program. No parking at all when soccer occurs. Driveways become blocked and become turn-around spaces. No real resolution to the street problems.
- Kayak launch not the topic for the day but another programing issue for parking.
- Noticing a recurring pattern with people from the south preventing the kayak and paddle boards so there is an attempt to push for a kayak launch in the North.
- Advise against baseball on field, it would be terrible for maintenance.

David:

- Lives on Bay Drive.
- Thank you for the great work.
- Using second story rooftop would gain space.
- Opposed to kayak launch. Even if intended to Surfside residents only, it would still be public, which will attract many people and lead to parking issue.

Sam:

- Lives on Bay Drive
- The designs are really nice.
- 5 kids, two born here. Use daily + weekends.
- To take away 10' for kayak launch from current usage is a lot. 10' could be added back in for usage. There are many other potential areas in Surfside. The canal is already very busy with boats, not safest spot to launch. Money to make it private would be best invested for another kayak launch elsewhere, maybe next to parking space next to Indian creek police department, 88th Street lots of parking. Would be safer to launch there.
- Both one-story and two-story buildings are good. Third level is a good idea.

Sylvio:

- Congratulate project, beautiful design.
- Not a big park, so everything presented looks great.
- Agree internal space should be bigger but I like the outdoor space.
- Maybe a blend with larger indoor space? Smart walls would be a good idea.
- The park is for all ages, and it would be a dream come true to see kayaks, and to see all activities merge.
- Should incentive people to scoot and bike, but haven't seen any parking for those. Large parking for those would incentivize, should focus on that.

Mr. Diego:

- Lives on Bay Drive across the street from the park.
- The design and work are incredible.
- Not going to talk about the kayak, it is clearly not happening since residents don't want it.
- Parking: right now only 7 cars can park there. Would like to see 10' of length of kayak to be considered to add diagonal parking to increase parking spaces. Would like to block and enforce no parking signs on resident side of street to maintain parking spots. Would like to see parking addressed in design.
- BM we tried an option with 45 deg street parking. It is a tight drive/parking without moving the curb and stormwater system. And if we did, it would be very expensive. Also, fire lane at the end of Bay Drive, so can't have parking encroach.
- Can we use the allocated square footage of the kayak launch for parking on site instead?
- BM: same issue, messing with the curb would be costly, also note that the maintenance path that doubles as kayak path – it isn't taking away from the park, it is reinforced lawn.
- Planning for a three-level building with that much programming with only 7 parked cars is absurd. City must take this into account.

Mrs. Diego:

- Agree about parking load. Maybe parking lot closeby?
- It would be a great idea to add stairs to get from the intercostal to use launch pad closer to them.
- Private and public: how can we police that?
- Commissioner Eliana Salzhauer: The park cannot be private if kayak launch exists.
- Commissioner Nelly Velasquez: The park can be private if kayak launch exists.

Herz:

- Lives on Bay Drive across from park.
- Also concerned with parking.
- Bay Harbor park has a mesh to protect balls flying over – would we be having the same?
- Same worries for kayak launch.

Ashley:

- Goes to park every day.
- Always chasing after field and playground, would be better to have playground closer to field.
- Everything beautiful, so excited.
- Assuming beautiful trees are staying, what happens to roots and surface material? Kids are always tripping on roots - keep that in mind. We hate the mulch it is dirty and creates a mess at home.
- BM: will develop materiality in DD. With existing trees, it is dangerous to cover roots with impervious surfaces and even with pervious surfaces, percolation will be tricky.

Gerardo:

- I like the designs very much.
- Hope that the landscape will add Florida natives + information about them. Town's landscapes are not sensitive for that issue.
- Sylvio Landell's bike racks idea is great. Small covered structure so that the seat doesn't get wet.
- Wouldn't want to add more car parking, don't want to take away space from the park. When you add parking you encourage more driving. Adding Permit parking on east side is fine. Hope to make public space for all comers. Grew up in Surfside since 1 yo. Why is everyone so skeptical about other people and scared about the unknown? Let's not let fear guide our design.

Ben Frank's wife

- Buying lot next to the park was brought up.
- Adding 1700 of community space can cause a lot of traffic.
- Love the shaded bike parking idea.
- I like free flowing free space vs enclosing the first level. The fact that we have enclosed space is already a huge improvement, no need more.
- Maybe a walking/biking incentive for people could be cheaper classes.

Bella Krieger

- Lives on Bay Drive, across of park.
- House near the park is on the market and with all the reserves the town has, don't see why we can't buy that and make the park even more spectacular to solve the kayak and parking issue.
- I am personally against kayak just because of limited parking, but open to it if purchase the lot. What is hesitation? Obviously financial but curious. Great that it is on sale while designing the park...

Janice

- The kayak data survey is confirmed and may not be a scientific survey but it was still great with over 500 responses after cleaning up data. Majority wants kayak launch. May not want at 96th st park, but most didn't have a preference on where it went. If opposed it would've stated that, probably a minority of people.
- Concern: nowhere in any outreach did people ask for programming. People didn't ask for large building, we just want more open green space with some bathroom. Concern of losing space on multipurpose field and not sure what shaded plaza used for, loss of program space.

Niles:

- 3 young kids, and we bike for soccer.
- Would love to kayak w kids. Park is the only place to have kayak launch.
- Feel like community Center won't be used. Build one on a new lot, but not on park lot.

Abe:

- Agree outdoor space as much as possible. Family in favor of kayak launch at 96th street and not at street end.
- Thank you for the hard work.

Franc:

- Is it true that the kayak launch has been mandated by the mayor?
- TM: No, it was said at the commission meeting to show where kayak launch would fit in the park, and this is what we are reflecting.

- BM: during the first community presentation, we didn't show it tonight, but want to remind you that you have a compact town, everything is 10-15 min walk / bike ride. Easily accessible with alternate modes of transportation. Any way we can incentivize would be great. I know that people have kids but it's really not far.

Sandra:

- Love kayak idea, real concern is lots of kids walking in - safety is my priority.

Sam:

- Majority walks to park. Walking with kayak is heavy and cumbersome.

Caroline:

- Enjoyed most of presentation, done very nicely but got lost after 30 sec.
- Bay Drive.
- Is there another kayak launch area in Surfside specifically?
- Parking situation – does the city have guidelines for buildings + parking spots reserved for people working there?
- We do not have the right amount of spaces for kayak launch.
- Not in favor of kayak launch

Debby:

- While understand neighbors not wanting kayak launch, a lot of people have been wanting it. Got to remind people no perfect area in Surfside for that, all residential. Something has to give, we need to meet in the middle. We can make it harder for people to come.
- We need to motivate people to come via wagon and bicycle. We do live in a tiny neighborhood. Everyone needs exercise.
- Kennedy park in coconut grove has more adult-oriented equipment, would like that.
- I encourage native plants and raising the ground as much as possible.

Fernanda:

- Building is beautiful, park is beautiful.
- Pro kayak, but agree about the parking issue.

Sebastian:

- Kayak sounds complicated to have in the park. We can't have it all. We should have people register to be able to launch a kayak + sign appropriate releases to not sue the city and some sort of badge access card to go through a door to reserve to residents only. Or the launch can be near the police station where the little path is, and it will help expedite park construction.



3.b Community Feedback | Dialogues

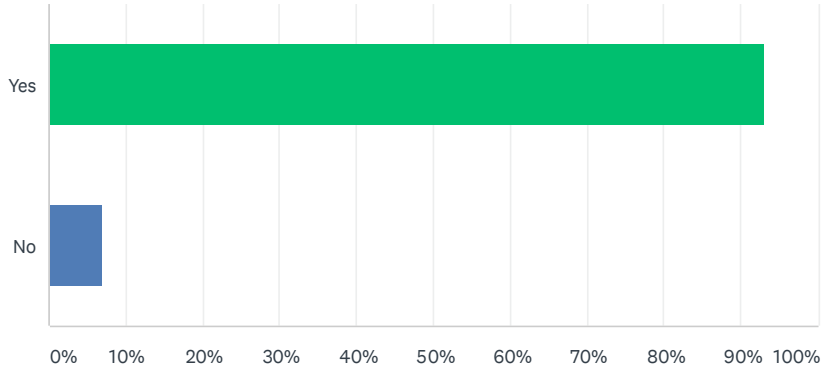
05.02.21 Farmer's Market

As part of the community input process, a table was set up at the Surfside Farmer's Market with a large scale poster of both design schemes and a QR code providing access to the digital survey. Kristelle from Savino Design Miller Studio was present to share and explain designs and answer questions from the community.

- As predicted, not everyone who attended the farmers market was a Surfside resident, but the people who voted/shared their thoughts were all Surfside residents.
- None of the people who voted had attended any of the public meetings related to the park.
- A lot of people didn't really have a strong preference between the two schemes, but voted scheme 2 specifically for the **2-story building**.
- A woman asked if we knew about EConcrete so we can use in the project, her friend in Israel owns the company. We are actually familiar with the product and are specifying it in some of our resiliency projects.
- A man did not want to vote because he said the money would be better spent to purchase the lot next door and expand the park/provide kayak + parking because the park is already fine as it is, some things could be upgraded.
- A woman said all she cares about is the removal of wood chips (she didn't vote, anything done to the park is good for her).
- No one was against the kayak launch.
- At least a couple of people scanned the survey bar code with their phone.

Q1 I am a Surfside Resident?

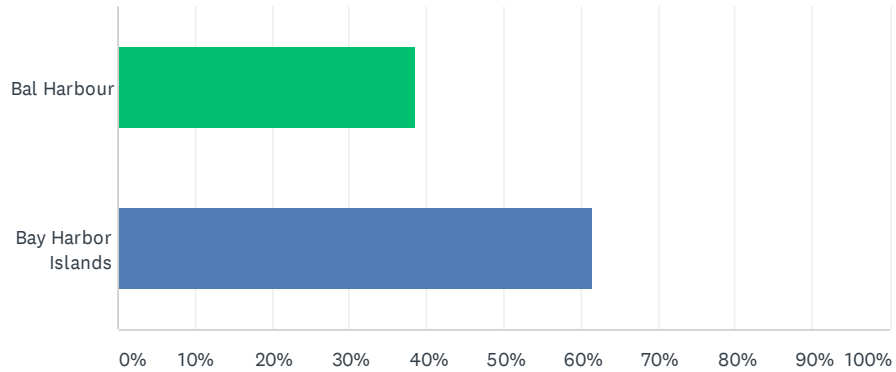
Answered: 205 Skipped: 0



ANSWER CHOICES	RESPONSES
Yes	93.17% 191
No	6.83% 14
Total Respondents: 205	

Q2 Where do you live?

Answered: 13 Skipped: 192



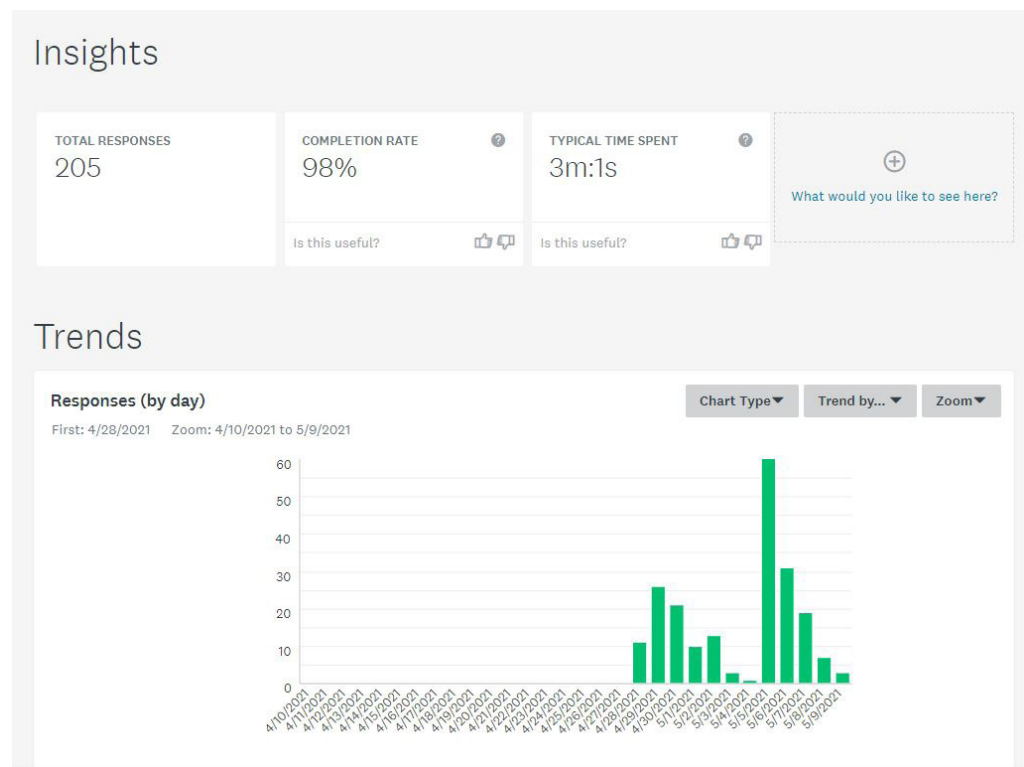
ANSWER CHOICES	RESPONSES
Bal Harbour	38.46% 5
Bay Harbor Islands	61.54% 8
Total Respondents: 13	

3.c Community Input | Digital Dialogues

04.28.21-05.08.21 Survey Monkey

As part of the community input process, a digital survey was conducted beginning the evening of April 28th and remaining open through the following full week and closing on Saturday, May 8th.

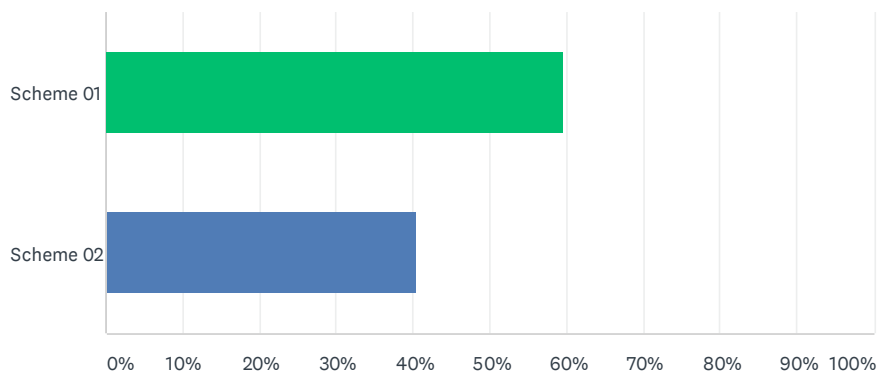
- **205 responses from the survey**



Community Dialogues: Designing the 96th Street Park

Q3 Which scheme is your preferred scheme?

Answered: 196 Skipped: 9



ANSWER CHOICES	RESPONSES
Scheme 01	59.69% 117
Scheme 02	40.31% 79
TOTAL	196

3.c Community Input I cont.

QUESTION 04:

What do you like about your preferred scheme?

Below is a summary of THEMES identified in the responses, while the following pages include the total 171 responses.

- Desired 2 Story Building: 26 [12.6%]
- Desired 1 Story Building: 31 [15.1%]
- Desired Visibility of Playground/Greenfield 37 [18%]

**this suggests the main comment was the location of the building in the Northwest Corner, so that all areas of park could be viewed from the central playground and the playground removed from the adjacent to the “street”.

- Desired Waterfront Engagement 08 [3.9%]

All comments about the Kayak launch in Questions 04 and 05 have been consolidated into a “Kayak Launch” section 3.c as part of this report. This allows a more focused evaluation of the design proposals and elements of Scheme 01 and Scheme 02.

Q4 What do you like about your preferred scheme?

Answered: 171 Skipped: 34

#	RESPONSES	DATE
1	Seems more balanced to have bldg in center	5/9/2021 3:39 PM
2	Hopefully it's a private Surfsider's only kayak launch or else parking will be a catastrophe.. like two story building	5/9/2021 11:47 AM
3	The kayak launch isn't visible to drivers, less traffic from non residents	5/9/2021 9:20 AM
4	The playground is not against the street.	5/8/2021 4:28 PM
5	The plan and the one floor building.	5/8/2021 3:48 PM
6	That the building is not in the middle between playgrounds so the kids can have better views of all the kids and moms too. Also the fact that the kayak has its corner far from the field so people are not walking in the middle of a soccer class.	5/8/2021 12:24 PM
7	Design and distribution of amenities	5/8/2021 12:18 PM
8	Centrally located 2 story building,	5/8/2021 10:49 AM
9	one story building	5/8/2021 8:08 AM
10	The way the building and kayak launch is positioned, the flow is very nice. I just wished the building was 2 stories in scheme 1.	5/8/2021 12:34 AM
11	Low building as I don't understand why a two story building is needed.	5/7/2021 11:43 PM
12	In scheme 2 there is more room in the building for youth programming like after school and camp.	5/7/2021 10:43 PM
13	The 2 story building	5/7/2021 7:50 PM
14	View of water	5/7/2021 7:45 PM
15	I think the playground being so close and open next to the playing field can be dangerous as there are soccer clinics, etc and little kids can get hit by the soccer balls or other flying objects. Design 2 gives better protection to the kids in the playground as the building divides the playground and the playing field.	5/7/2021 7:01 PM
16	Centralized building location	5/7/2021 6:49 PM
17	I prefer the one story building in the corner.	5/7/2021 6:48 PM
18	Kayak launch	5/7/2021 6:42 PM
19	More space for events, classes.	5/7/2021 5:57 PM
20	Building in back and location of paddle board launch	5/7/2021 5:55 PM
21	Kayak launch, ant rooms for clases or gym	5/7/2021 5:51 PM
22	Location of Kayak launch Location of playground	5/7/2021 5:42 PM
23	Versatile. Smart kayak launch location. In alignment with existing community center. Why not create use of roof?	5/7/2021 4:11 PM
24	House is more north so field lvan be better utilized	5/7/2021 5:01 AM
25	Playground is further away from the street. A 1-story building seems less disruptive.	5/6/2021 10:35 PM
26	Layout	5/6/2021 5:27 PM
27	We made the mistake of not building 2 stories at the pool, should not make same mistake again if building at the park	5/6/2021 5:27 PM

Community Dialogues: Designing the 96th Street Park

28	Kayak launch is further from the bridge. Building could have a additional use for residents on the second floor. Playground should be smaller. There should be a shaded plaza by the water for adults away from bball and playground as well.	5/6/2021 4:22 PM
29	One story building.	5/6/2021 2:44 PM
30	The 2 story building	5/6/2021 2:30 PM
31	Preferable layout.	5/6/2021 1:18 PM
32	Location of building	5/6/2021 12:15 PM
33	Kayak launch is to the south	5/6/2021 12:14 PM
34	Building and south side launch	5/6/2021 12:01 PM
35	Looks like a better layout and more stuff on the waterfront.	5/6/2021 11:16 AM
36	One story building on the side. Playground together with all the other green areas. More aesthetic conformity.	5/6/2021 11:15 AM
37	We need a kayak launch at the park.	5/6/2021 10:34 AM
38	Playground and field on same side. Easier for parents to watch multiple kids (of different ages).	5/6/2021 10:11 AM
39	smaller building	5/6/2021 10:10 AM
40	I like the wrap around deck on the second floor and open space on first floor.	5/6/2021 9:51 AM
41	centered, more space with second floor, devides lot logically, doesnt overwhelm corner w/bridge.	5/6/2021 9:45 AM
42	Building has more room for activities and location of kayak launch site looks better (less crowded).	5/6/2021 9:05 AM
43	Building blocks 96th St view and noise. Kayak launch closer to building.	5/6/2021 8:31 AM
44	More indoor space for events	5/6/2021 8:23 AM
45	Esthetically VERY pleasing and the covered porch areas look very inviting.	5/6/2021 7:37 AM
46	There are no many places where you can build in Surfside and the second design maximizes the space available to build. It is important to have the space as it will allow to have more activities for the community during our brutal summer. The community keeps growing and we need to accommodate the growth with installations. It's a pity the community center is not 2 stories high... I love that we will have the kayak launch!	5/6/2021 7:33 AM
47	Having the buildng more centered and closer to the bay and the kayak ramp farther from the bridge.	5/6/2021 7:31 AM
48	Kayak entry is away from main road	5/6/2021 7:17 AM
49	One story building	5/6/2021 7:08 AM
50	Nothing	5/6/2021 1:39 AM
51	The building one story	5/6/2021 12:25 AM
52	They're both disappointing but the first scheme looks a tad bit less disappointing. The building is more attractive and conveniently borders the kayak launch so a park employee can monitor it. The playground space and shade looks more inspired. But a path for a kayak launch at the north part of the park is a bad idea. Unless you live across the street, the kayak is going to be driven to the site. So cars will be parked far from the path and people will somehow have to lug the kayak all the way north. Also, both designs fail to take advantage of all the waterfront. The multipurpose field does not need to abut the water - you're putting up a 20 foot fence to make that point. Have the field run along the length of the street and put the shady area next to the water.	5/5/2021 10:14 PM
53	That the building is a one story and that it is in the corner of the lot not in the middle.	5/5/2021 10:10 PM
54	No Kayak launch	5/5/2021 9:41 PM

Community Dialogues: Designing the 96th Street Park

55	As a parent, I feel it is important to be able to maintain full visual of majority of the grounds from either playground, or shaded plaza. Yesterday scheme 2, the building will block view of the playground from the field and vice versa. If I bring my young child to play in the playground, I want to be able to supervise my older child who is playing on the field or on the basketball court while in playground. Putting the building in the ' corner' of the lot enables for a more open layout of the grounds and a safer more comfortable place for parents to bring their children. I like that the playground is on the waterfront, and not by the traffic of the bridge. Better that the building be next to the busy traffic.	5/5/2021 8:48 PM
56	It appears to have a smaller foot allowing more green space.	5/5/2021 8:23 PM
57	Visibility of the field from the playground.	5/5/2021 8:10 PM
58	Smaller building footprint /seems to be laid out better /don't care about a kayak launch	5/5/2021 7:43 PM
59	IT seems more organic such that it was thought out this way from the start. I like that the Kayak launch would be shaded. I like the path having curves. All elements seem more integrated in a more fluid way.	5/5/2021 7:43 PM
60	Kayak near the bridge makes more sense, why do we need a 2 story building?	5/5/2021 7:40 PM
61	Larger building, easier access to launch for surfside residents, distance from dirt and debris at bridge.	5/5/2021 7:05 PM
62	I like the park near the bridge.	5/5/2021 6:30 PM
63	Larger playground, playground adjacent to field	5/5/2021 6:28 PM
64	Easier entry into park area from the street for kayaks and less exposure of kayak launch to 96th Street	5/5/2021 6:21 PM
65	shade by playground low building	5/5/2021 6:19 PM
66	Kids in playground are close to shaded area and field. Easier to watch kids of different ages.	5/5/2021 6:19 PM
67	One story building, you can see the field from the playground,	5/5/2021 6:16 PM
68	The layout BUT with the two story building	5/5/2021 6:09 PM
69	Beautiful	5/5/2021 6:04 PM
70	Playground and field are close to each other so we can watch big kids on the field and little kids on playground at the same time.	5/5/2021 6:03 PM
71	I don't like either scheme. I don't want a kayak launch.	5/5/2021 6:00 PM
72	The kayak launch is away from the street.	5/5/2021 5:55 PM
73	Building in the center. Away from kayak area. Playground in the corner.	5/5/2021 5:52 PM
74	Park isn't near street	5/5/2021 5:49 PM
75	I don't want the building ruining the view and flo of the park	5/5/2021 5:47 PM
76	The building location. If it is closest to the street, then it doesn't separate the playground from the open field. When they are separated it will be hard for a parent to watch their kid at practice while the other is on the playground.	5/5/2021 5:37 PM
77	Scheme 2's building has perfect access from every part of the park.	5/5/2021 5:36 PM
78	I like that the building isn't blocking the water view and the space feels more open with the location of the building. Also, it looks like access to the kayak launch is not restricted (I can't tell if the walk way is restricted in scheme 02). I also like that the building will block noise from the bridge.	5/5/2021 5:35 PM
79	i prefer #2 but we need a cost valuation for both to say which is best or not	5/5/2021 5:12 PM
80	Kayak area and 2 story building	5/5/2021 5:07 PM
81	Kayak launch far from bridge. When the water is not calm it can be dangerous if people is close to the bridge.	5/5/2021 5:06 PM
82	The park is further away from the road and therefore the car fumes	5/5/2021 4:55 PM

Community Dialogues: Designing the 96th Street Park

83	I like that the building is in the middle and allows to be a central point of meeting	5/5/2021 4:50 PM
84	simple and kayak launch in the correct location	5/5/2021 4:48 PM
85	The park is much more open with the building in the corner.	5/5/2021 4:45 PM
86	Location of the amenities vis a vis the street and the neighborhood	5/5/2021 4:41 PM
87	CENTRAL TWO STORY STRUCTURE	5/5/2021 4:37 PM
88	MAXIMIZE INDOOR SPACE FOR RAINY DAY ACTIVITIES BY HAVING TWO STORIES. VERY ATTRACTIVE IN OF SAME SCALE AS THE NEIGHBORHOOD.	5/5/2021 4:37 PM
89	Two story building, that maybe allows more space for some after school programs for kids.	5/5/2021 4:35 PM
90	Playground is not next to road/bridge noise and exhaust fumes	5/5/2021 4:35 PM
91	I like that the playground bigger, there is always a lot of kids and it seems to be what is used the most! The kayak launch is next to the building, it doesn't make sense to cross the whole field.	5/5/2021 4:31 PM
92	One story building	5/5/2021 4:27 PM
93	Views from 2nd story building. Larger building equates to more options and uses. Kayak launch is further away from the bridge. Design Feels less congested.	5/5/2021 4:26 PM
94	The two story building will give expansion options in the future.	5/5/2021 4:25 PM
95	Two story building. Provides more potential benefit to town and residents.	5/5/2021 4:24 PM
96	Two story building.	5/5/2021 4:24 PM
97	Playground away from bridge	5/5/2021 4:23 PM
98	Larger playground	5/5/2021 4:20 PM
99	It's a much better layout	5/5/2021 4:18 PM
100	that the building isn't stuck right in the middle of the usable space	5/5/2021 4:17 PM
101	Kids play area is away from 96th traffic noise...	5/4/2021 10:12 PM
102	Placement of all components	5/3/2021 9:40 PM
103	I like the playground	5/2/2021 5:08 PM
104	1 Story	5/2/2021 5:07 PM
105	1 story building	5/2/2021 4:53 PM
106	1 story building	5/2/2021 4:52 PM
107	The 1 story building and smaller carbon footprint	5/2/2021 4:51 PM
108	The field and the playground are right next to each other	5/2/2021 4:50 PM
109	The location of the facilities throughout the park; Please do not include the kayak launch at the park ;)	5/2/2021 4:50 PM
110	The location of the playground	5/2/2021 4:49 PM
111	The layout looks nice and the fact that there isn't a building smack in the middle of the park	5/2/2021 4:48 PM
112	It is only a 1 story building	5/2/2021 4:47 PM
113	1 Story	5/2/2021 4:46 PM
114	The building is in the corner	5/2/2021 4:45 PM
115	Room for activities!	5/2/2021 3:30 PM
116	Nice design layout and 2 story building. It would also be nice to have a kayak launcher	5/1/2021 6:29 PM
117	The	5/1/2021 6:28 PM

Community Dialogues: Designing the 96th Street Park

118	Well thought out and a great use of all the space.	5/1/2021 11:22 AM
119	Well thought out and great use of space.	5/1/2021 11:18 AM
120	2-story building. Nice view! More space.	5/1/2021 10:22 AM
121	i like the building in the corner and that the playground borders the main field	5/1/2021 10:07 AM
122	I like the layout of scheme 1 but prefer the two story building of scheme 2 - better to build w growth in mind unlike the community center which is always discussing expansion & a second story! I like the playground location away from the street and the kayak launch away from the houses - BUT WHERE IS PARKING OR KAYAK DROP OFF?	5/1/2021 7:42 AM
123	the building should be in the back DONT TAKE grass of the playing area to put the building there the thing about this park it has a lot of green space FREE. dont mess it up with so much let it be green and spacious put the building in the back	5/1/2021 7:41 AM
124	Playground not next to the street Offices next to the kayak launch area	5/1/2021 7:03 AM
125	1 story building in the corner of the park make the park feel more open.	4/30/2021 9:01 PM
126	All tree areas together	4/30/2021 7:32 PM
127	smaller Bldg footprint	4/30/2021 6:21 PM
128	I like that it appears that the playground is more visible from the area with the existing trees. The trees that are there now make 96 St park bearable even on summer days and it would be nice to sit there while watching the kids in the play area.	4/30/2021 6:13 PM
129	Separation between BBall court & Playground. Don't need a two story building	4/30/2021 5:52 PM
130	Nicer building incorporates waterfront.	4/30/2021 5:45 PM
131	more indoors and outdoors space in the building	4/30/2021 5:43 PM
132	Building being just 1 story	4/30/2021 5:42 PM
133	I don't like the 2 because has the playground right next to the street/bridge.	4/30/2021 5:39 PM
134	simplicity	4/30/2021 5:38 PM
135	Greenspace is prominent. Building is not the focus. Also like that provides unobstructed view of the playground and field (not with a building stuck between them	4/30/2021 5:35 PM
136	one story building is less intrusive, however, there is no need to have a building in a small park at all, other than restrooms. keep it all green space. we already have a community center - for a 1 square mile town with inadequate green space, there is no need for an enlarged building at all.	4/30/2021 5:23 PM
137	Larger playground	4/30/2021 4:35 PM
138	The building would be along the side where the cars pass so there would be more privacy for kids to play in the playground. Also the playground would be next to the field would be nice so they can run and play which is similar to what the kids have now.	4/30/2021 3:53 PM
139	It's a beautiful design architecturally and aesthetically	4/29/2021 8:10 PM
140	Honestly, it doesn't look like community input was considered with either design. Why do we need another large indoor space? We already have the community center. I only chose the first option because it has a smaller building. We should spend our money on quality floor materials for the play areas, progressive and top of the line playground equipment, and other items that are important for the community that actually uses the spaces.	4/29/2021 7:32 PM
141	That the playground is in the corner Easier to see kids that way from one vantage point	4/29/2021 6:22 PM
142	elevation and placement.	4/29/2021 5:25 PM
143	The playground is away from the road	4/29/2021 1:25 PM
144	The design	4/29/2021 12:24 PM
145	That the building and kayak launch are together off to the side, leaving more unobtrusive open space.	4/29/2021 12:05 PM

Community Dialogues: Designing the 96th Street Park

146	Not as big of a building and more place to play	4/29/2021 12:02 PM
147	One story	4/29/2021 11:57 AM
148	I don't want any building or kayak launch. I live right next to the park and do not want other people coming in influx to my neighborhood	4/29/2021 11:48 AM
149	That the shaded area is next to the playground so I can watch my kids while they play at a safe distance.	4/29/2021 11:46 AM
150	Playground is in the middle of the park not next to the street!	4/29/2021 11:41 AM
151	Building along the street	4/29/2021 11:31 AM
152	I like the location of the playground- further from the busy street	4/29/2021 11:19 AM
153	If there it's going to be a building, it should be next to the street. The playground should be protected. Please note, with both designs every man I have talk to you highly desires the padded recycled rubber surface that are at all of the other city playgrounds. The wood chips are horrible. Many moms from Surfside walk farther to avoid the wood chips. Wood chips are not ideal for a toddler Playground especially because kids are learning to walk and fall down a lot.	4/29/2021 11:09 AM
154	Playground is next to the open field so you can be on the field with one child while others are in the playground	4/29/2021 10:30 AM
155	Love the kayak launch area. And playground in middle.	4/29/2021 9:56 AM
156	The building is in the corner and its 1 story and it blocks the sound of the road and the tot lot is jot facing the street and the kayak launch is in that corner as well.	4/29/2021 9:54 AM
157	playground is away from street noise	4/29/2021 9:30 AM
158	Playground more visible if I have a child on the field as well.	4/29/2021 9:06 AM
159	That the plaza building is where the kayak launch is .	4/29/2021 8:51 AM
160	Low profile building with view of entire park + central playground.	4/29/2021 12:18 AM
161	Kayak launch at North end and option to put one at South end. Kayak launch is #1 priority.	4/28/2021 9:12 PM
162	2 stories with smaller footprint but there should be a third floor deck for extra outdoor space	4/28/2021 9:01 PM
163	Belloo	4/28/2021 9:01 PM
164	Two story building more space. Should have rooftop space be utilized for adult programming. Location should be next to the bridge to playground is next to the fields	4/28/2021 9:00 PM
165	Single story	4/28/2021 8:59 PM
166	Do Not want to see a kayak launch.	4/28/2021 8:59 PM
167	Smaller, more hidden building	4/28/2021 8:51 PM
168	It's a good fit on the property.	4/28/2021 8:35 PM
169	less building is better, leaves more open space. better location in corner also.	4/28/2021 8:10 PM
170	2 story building	4/28/2021 8:01 PM
171	The Kayak pathway will be easier to access and private. Also, like the Community Room bldg.	4/28/2021 7:01 PM

3.c Community Input I cont.

QUESTION 05:

What do you like about the scheme that you did not choose? Any additional thoughts?

Below is a summary of THEMES identified in the responses, while the following pages include the total 142 responses.

- Comments on 2 Story Building: 24 [16.9%]
- Comments on 1 Story Building: 09 [6.3%]
- Desired Playground Surface 09 [6.3%]
 **no woodchips, use rubber soft surface
- Desired Building Location in NW Corner 12 [8.4%]

All comments about the Kayak launch in Questions 04 and 05 have been consolidated into a “Kayak Launch” section 3.c as part of this report. This allows a more focused evaluation of the design proposals and elements of Scheme 01 and Scheme 02.

Q5 What do you like about the scheme that you did not choose? Any additional thoughts?

Answered: 142 Skipped: 63

#	RESPONSES	DATE
1	Kayak launch by bridge. Playground closer to center -not street. Launch away from homes.	5/9/2021 3:39 PM
2	Nothing	5/9/2021 11:47 AM
3	The building looks very nice	5/9/2021 9:20 AM
4	The two story building.	5/8/2021 4:28 PM
5	More cost not necessary.	5/8/2021 3:48 PM
6	nothing	5/8/2021 12:24 PM
7	I don't think we need a two story building	5/8/2021 12:18 PM
8	I would prefer the kayak launch by the bridge, people watching field games would obstruct pathway, & bridge will serve as a buffer from boaters.	5/8/2021 10:49 AM
9	thought the layout was nice and covered all the bases	5/8/2021 8:08 AM
10	I like the fact that the building is two stories! More useful space fir community.	5/8/2021 12:34 AM
11	I like the layout plan in scheme 1.	5/7/2021 10:43 PM
12	I am confused . On the one hand you wanted to close the streets on 96th because of the traffic and people walking in the community and now you want to put a public kayak launch next to a kids park ??? Traffic ? Garbage ? Where will people park ? And turn around their cars ?	5/7/2021 8:36 PM
13	I like the layout. The building is in the corner instead of the middle in #1.	5/7/2021 7:50 PM
14	Nothing. Potential for kids getting hurt in the playground by activities in the playing field. Would not want my kid to be hot by flying ball, frisbee, etc. A big liability for the town.	5/7/2021 7:01 PM
15	The one story building	5/7/2021 6:42 PM
16	Playground	5/7/2021 5:55 PM
17	I like the two-story building, but not in the proposed location	5/7/2021 5:42 PM
18	Building feeling of being in a Park, not next to bridge overhead. These are both very simple and versatile. Too much basketball space. Make it multipurpose..	5/7/2021 4:11 PM
19	the building is much too big. Is it a new community center??	5/7/2021 1:26 PM
20	The size of the shaded plaza and the pathway through it	5/6/2021 5:27 PM
21	I didn't like the kayak launch under the bridge and the access along the road.	5/6/2021 4:22 PM
22	Smaller field but the building was included and a bigger shaded area.	5/6/2021 2:44 PM
23	Additional Thoughts: structure should be two stories and have solar panels. HOXXOH paining should remain. What other "sustainability" features are contemplated?	5/6/2021 1:18 PM
24	Building is a bit more functional, but I'm not sure what the skinny balcony would be good for.	5/6/2021 12:15 PM
25	The kayak path went past the building so more control of residents usage	5/6/2021 12:14 PM
26	Playground adjacent to the field. Easier child supervision.	5/6/2021 12:01 PM
27	Two story building and kayak launch location are better in plan 2. Both plans could be better if there was more stuff by the water. Shady area should be there, not by the street.	5/6/2021 11:16 AM

Community Dialogues: Designing the 96th Street Park

28	Nothing I liked about. Is the kayak launching open just for residents or everyone?	5/6/2021 11:15 AM
29	I think the building in the corner is the best location for it.	5/6/2021 10:34 AM
30	Kayak launch on south appears to be more accessible. North side launch seems to be uncomfortable in its access?	5/6/2021 10:11 AM
31	?	5/6/2021 10:10 AM
32	The position of the building. I think the 2 story building should be in that locations.	5/6/2021 9:51 AM
33	not sure	5/6/2021 9:45 AM
34	More free area.	5/6/2021 9:05 AM
35	Two story building is nice if it has more program space. Would definitely locate it next to 96th though to act as buffer. Also need to consider ADA - does 2-story require elevator? If so stick to one story.	5/6/2021 8:31 AM
36	Too small and does not meet the initial needs plus not enough shade areas or creative breeze areas.	5/6/2021 7:37 AM
37	It has a bigger playground but in my experience it's not about how big the playground is but the kids that are there to play together. We need a bigger building.	5/6/2021 7:33 AM
38	Kayak ramp so close to bridge. Additional thought would be to use design #2 with a one story building.	5/6/2021 7:31 AM
39	Two story building. Placement of building.	5/6/2021 7:08 AM
40	Stop spending so much money on bull shit projects.	5/6/2021 7:05 AM
41	Both schemes are terrible! Surfside deserves a better park. The town shall announce a contest of projects. Waste of money. Over 10 years the administration cannot upgrade the park. There is nothing to be proud of. Kayak launch must have a storage house, parking spaces and shall be located somewhere else.	5/6/2021 1:39 AM
42	The building in the middle	5/6/2021 12:25 AM
43	The South Path an kayak launch is better than north for reasons stated above. See other comments above also. Hard to believe that If were starting from scratch these two are the best designs we can do.	5/5/2021 10:14 PM
44	I don't want a kayak launch. I do not want extra people coming to our park.	5/5/2021 10:06 PM
45	Location of the building.	5/5/2021 9:41 PM
46	What will be in the building?	5/5/2021 8:23 PM
47	Kayak launch further away from playground.	5/5/2021 8:10 PM
48	THE two story building seems out of place and too high compared to surroundings. Kayak path would be very sunny and hot. It just reads like a bunch of different things smushed together.	5/5/2021 7:43 PM
49	There should be no kayak launch at this park	5/5/2021 7:41 PM
50	nothing, first scheme is better	5/5/2021 7:40 PM
51	Please do not use the wood chips. They are messy and dangerous for little kids.	5/5/2021 6:30 PM
52	2-story building	5/5/2021 6:28 PM
53	The one-story building in scheme 01 is nice	5/5/2021 6:21 PM
54	Misters around park is a great idea for hot days. Thank You!!	5/5/2021 6:19 PM
55	Kayak launch in the south corner	5/5/2021 6:16 PM
56	No kayak launch!!!	5/5/2021 6:00 PM
57	They are very similar. I just prefer the building in the middle for esthetics	5/5/2021 5:55 PM
58	I didn't like the layout. And if you are building a structure, why not build it with a second floor	5/5/2021 5:52 PM

Community Dialogues: Designing the 96th Street Park

already?

59	It's fine just less private ...	5/5/2021 5:49 PM
60	The two story building. But NOT the location.	5/5/2021 5:37 PM
61	I think scheme 2 has the best flow and makes the most sense for the building placement. It also allows there to be another level which could be used for many things.	5/5/2021 5:36 PM
62	I like the location of the paddle board launch better. Less noise being away from the bridge.	5/5/2021 5:35 PM
63	we need maybe more space for infants	5/5/2021 5:12 PM
64	I would like information about the building. It will be with several rooms? Gym? Or party room?	5/5/2021 5:07 PM
65	The one I did not choose, I like the fact that it is one story better than 2 stories. ADA, cost of building it, its more "usable" when is 1st level.	5/5/2021 5:06 PM
66	They're both similar but I don't like the idea of the bit that should be for kids being nearer the road, fumes and noise rather than closer to the open field and water.	5/5/2021 4:55 PM
67	I like the kayak launch position on the first scheme	5/5/2021 4:50 PM
68	I'm concerned with the overall footprint of the building. Which footprint is bigger the one or two story? Is it possible to place the two story in the northwest corner? I also do not support the kayak launch at the 96th street park.	5/5/2021 4:45 PM
69	The two story building is very important and plans for growth and multi use	5/5/2021 4:41 PM
70	I'D KEEP THE KAYAK LAUNCH SPOT FROM SCHEME 1 IN SCHEME TOO (CLOSER TO BRIDGE)	5/5/2021 4:37 PM
71	IT'S FINE BUT NOT MAXIMAL USE OF LOT.	5/5/2021 4:37 PM
72	The only reason I picked scheme 2 is because of the 2 story building, otherwise, they both are fine.	5/5/2021 4:35 PM
73	Like the 2 story. We also really need a fishing location for kids in surfside. Create a fishing boardwalk ?	5/5/2021 4:35 PM
74	I would do the playground as big as possible!	5/5/2021 4:31 PM
75	Building at the corner and more open space for other amenities	5/5/2021 4:27 PM
76	Similar look and meets minimum objectives.	5/5/2021 4:26 PM
77	Too close to bridge. Noise. Location of bathrooms/water fountains is furthest from field.	5/5/2021 4:24 PM
78	The building of scheme 1 is facing 96, blocking noise. Unfortunately, it is not clear if both buildings have the same total area. With a two story building, scheme 1 would be the best choice for me.	5/5/2021 4:24 PM
79	Playground close to the bridge and two floors rec center	5/5/2021 4:23 PM
80	Kayak ramp further from the street	5/5/2021 4:20 PM
81	The first scheme is sub optimal. By the way, this is the 3rd time I've voted.	5/5/2021 4:18 PM
82	two story building. Its counter-productive to pay for full blown renderings without first discussing the current/future use of the land, walkable and usable footprint, and future street traffic flow possibilities. At least then you could narrow down what was in the best interest of the town prior to throwing away money.	5/5/2021 4:17 PM
83	We really need a better playground that serves children 2-12 for the betterment of the surfside community. As a mother I can tell you the wood chips are a disaster. All new and modern playgrounds in miami and broward have more child friendly and sophisticated floors. They are a mess and a breeding ground for bugs, mold and bacteria	5/5/2021 4:10 PM
84	I would place it at far north of park	5/5/2021 4:00 PM
85	Where is the parking? You need to include parking if you're building such large facilities. Where so people park to use the kayak launch?	5/5/2021 3:42 PM

Community Dialogues: Designing the 96th Street Park

86	I like the 2 story building if it adds real functional space not just to have extra office/storage space. But would prefer the structure to be adjacent to 96th not in the center of the park	5/4/2021 10:12 PM
87	The two story building	5/3/2021 9:40 PM
88	I don't like the 2 story building	5/2/2021 5:08 PM
89	I do not like the kayak launch	5/2/2021 5:07 PM
90	No kayak launch por favor	5/2/2021 4:53 PM
91	Putting the kayak launch at the park would be a horrible mistake	5/2/2021 4:52 PM
92	I do not like the playground next to the cars and the building smack in the middle	5/2/2021 4:51 PM
93	I do not like the kayak launch at all. I think it should go on 88th Street	5/2/2021 4:50 PM
94	Not much	5/2/2021 4:50 PM
95	I HATE the kayak launch at the park	5/2/2021 4:49 PM
96	I don't like much about option 2	5/2/2021 4:48 PM
97	I don't like the layout of design 2 or the inclusion of the kayak launch	5/2/2021 4:47 PM
98	I don't like the 2 story building	5/2/2021 4:46 PM
99	I do not like the Kayak launch at the park	5/2/2021 4:45 PM
100	Kayak launcher	5/1/2021 6:29 PM
101	This is my second vote, from another of my devices. I could continue with my many other devices, but I think you get my point on the potential validity of this type of voting system.	5/1/2021 11:22 AM
102	The building next to the bridge is sub optimal.	5/1/2021 11:18 AM
103	Kayak launch and building in Northwest corner. Big playground.	5/1/2021 10:22 AM
104	I like the location of the kayak launch and the buidkings in scheme 1 but like the 2 story larger building in scheme 2 - also like that scheme 1 seems to have a separate bathroom - but neither has parking	5/1/2021 7:42 AM
105	nothing that building should be in where is now or even further back no ones uses it , and no one will let this green area be the BIGGEST , let kids run free , not so much junk or things to include	5/1/2021 7:41 AM
106	We would like to know more details about the playground and the games included, very important! (a tirolesse would be great...)	5/1/2021 7:03 AM
107	It might be nice to have the additional building space that a two story structure could offer. I'm not sure if this has already been discussed, but I would prefer not to have rubber turf flooring on the playground. It is nice and springy, however, in the heat and sun, it seems to emit a lot of fumes, which seems especially problematic for the little ones.	4/30/2021 6:13 PM
108	2 story building is the center piece of Scheme 2	4/30/2021 5:52 PM
109	It's nice also but the building isn't as versatile	4/30/2021 5:45 PM
110	liked the fact building was in the corner giving more space for the playground and others	4/30/2021 5:43 PM
111	The 2 story building	4/30/2021 5:39 PM
112	nothing	4/30/2021 5:38 PM
113	nothing. DO NOT LIKE or WANT KAYAK LAUNCH AT THE PARK!	4/30/2021 5:35 PM
114	I like the idea of a 2 story structure with additional space for indoor activities. Want more details about the plans, like how much square footage would 2 story structure add and the anticipated use(s) for the extra space.	4/30/2021 4:35 PM
115	2 story structure	4/30/2021 3:53 PM
116	The middle is nice and looks serene	4/29/2021 8:10 PM

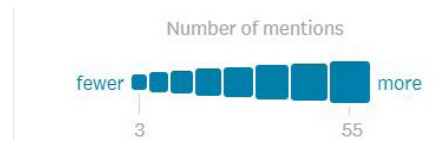
Community Dialogues: Designing the 96th Street Park

117	The designs are underwhelming. This is basically the same park with less field space for the special events beloved by the community. Was functionality considered? Or the residents' input?	4/29/2021 7:32 PM
118	i didn't choose it, its nice but i think the one i chose will better serve the community.	4/29/2021 5:25 PM
119	4' HT fence should be reconsidered for a children's park near the water.	4/29/2021 1:25 PM
120	I think wood chips is a terrible idea and have yet to find a single parent who likes them. I'm also hesitant about what will happen if we have a kayak launch there, bringing more vehicle and foot traffic to an already very-occupied area.	4/29/2021 12:05 PM
121	The playground can not be wood chips!!! Horrible fir children. So dirty and buggy. Parks in bay Harbour so much nicer with turf. Also kayak launch is horrible for the community put on that park!! Too much happening there and so much traffic already. Also very dangerous with how busy that water area is.	4/29/2021 12:02 PM
122	Yes I do not want a kayak launch.	4/29/2021 11:57 AM
123	I would love the playground redone but I do not want any kayaks or buildings added to our current playground	4/29/2021 11:48 AM
124	Please put rubber floors in park mot the little cheap wood thats full of mosquitoes ans bugs, males The little ones legs and their clothes dirty!!!! Also some water Fluntains to play like the bay harbour park will be great!!!	4/29/2021 11:41 AM
125	Not sure if there are more benefits to the two story building?	4/29/2021 11:31 AM
126	I like the location of the kayak launch on the south side of the park. Further from the busy street- less people to see you in your swimsuit! And a slightly shorter walk if lugging a kayak would be appreciated! PLEASE DON'T USE WOODCHIPS IN THE PLAYGROUND! Little kids eat them and it's very messy for everyone	4/29/2021 11:19 AM
127	I cannot tell from the pictures however for both pictures I hope that the town is modeling it after the Bayharbor or Playground with turf and not grass. Also having the playground with a soft padded surface, absolutely not wood chips. They are a mess, they hurt, there are so many bugs & mosquitoes (don't tell me there aren't because I go to 6 different playgrounds weekly and the only time we have bites are from Surfside), and kids fall down and impale themselves.	4/29/2021 11:09 AM
128	I don't like it, the building will separate the area and it will be difficult to walk around.	4/29/2021 10:30 AM
129	No additional comments	4/29/2021 9:54 AM
130	Location of the kayak launch	4/29/2021 9:06 AM
131	That the kayak launch wasn't so close to the bridge.	4/29/2021 8:51 AM
132	The extra covered deck space. I do not like the fence around the playground. Unnecessary double fencing.	4/29/2021 12:18 AM
133	2 story bldg does not buy us any extra space and breaks up flow of the park. Really would like the size of the playground increased. The pirate playground down the road had great space.	4/28/2021 9:12 PM
134	NO KAYAK LAUNCH	4/28/2021 9:01 PM
135	Bad	4/28/2021 9:01 PM
136	Larger footprint on option 1.	4/28/2021 9:00 PM
137	I prefer the building in the NW corner	4/28/2021 8:59 PM
138	No KAYAK launch.	4/28/2021 8:59 PM
139	I am concerned that both buildings are not functional spaces. Too small and awkward. The park is not the place for indoor programs.	4/28/2021 8:51 PM
140	Nothing.	4/28/2021 8:35 PM
141	i like the shaded area and open-air of the 1st floor of 2 story	4/28/2021 8:01 PM
142	The shaded plaza can incorporate the playground.	4/28/2021 7:01 PM

- **Question 04: Chosen Scheme Comments**

Q4 What do you like about your preferred scheme?

way don t want Playground next Larger playground shaded indoor space open building back
 corner one story middle trees building corner big away want
 One story building Surfside Also together space well smaller prefer
 design far better traffic area next street story building don t
 location noise park north playground water
 building Easier kayak launch put field away street
 bridge launch kayak residents street people view community need south
 two story building 96th will allow scheme see kids central layout isn t
 stories playing field close open space nice green space next right next side one



- **Question 05: General Feedback**

Q5 What do you like about the scheme that you did not choose? Any additional thoughts?

need want kayak launch two story story structure layout scheme best bridge bigger playground
 big less area idea use open scheme next think 96th nothing serve
 also center location floor playground included
 kayak launch plan building community park one
 space additional better don t two story building people
 nice fact will put much bit kids great street similar story building footprint
 prefer first scheme want wood chips close bridge Kayak launch south field



4 Community Intake Conclusions

In conclusion, out of the 205 responses we have identified a series of themes from Questions 04 + 05 as outlined above. On the following pages we are tying those responses and DESIGN CHARACTERISTICS found within both the Design Schemes 01 + 02 and the design elements represented with them. This allows the report to represent the community's desired town characteristics, independent of a design scheme.

Lastly, we have designated a section at the end of the report to represent the Kayak responses; we feel it is critical that the kayak launch is addressed independently from the design proposals Scheme 01 and Scheme 02; but that the specific feedback regarding a kayak launch be understood as independent feedback.

4.a Preferred Community Design Themes

- **2 Story Building or 1 Story Building**

An extremely common response within the community was addressing the idea of the 1 story or 2 story building. The feedback was pretty evenly split in that 26% of community comments on Question 4 were in favor of the 2 Story, while 31% were in favor of a 1 story building.

- **Building Location**

Another very common theme from the community was the location of the building. The strong majority of the responses were in favor of a building located in the North West corner of the park; it was repeatedly proposed this would proffer a stronger visual connection between the playground spaces and the mixed-use green space for parents with children of a range of ages at the park.

- **Playground Surface Material**

There were several responses addressing the material surface of the playground and mixed-use green space. The majority of the comments addressing the surface [almost all] were in disagreement with the current woodchips or bark material and requested a rubber surface, smoother and potentially less “bug” infested.

4.b Kayak Comments + Statistics

QUESTION 04:

What do you like about your preferred scheme? [171 total responses]

Below is a summary of the responses that address a kayak launch specifically.

- Comments in favor of Kayak Launch: 35 [20.4%]
- Comments against Kayak Launch: 05 [2.9%]

QUESTION 05:

What do you like about the scheme that you did not choose? Any additional thoughts? [142 total responses]

Below is a summary of the responses that address a kayak launch specifically.

- Comments in favor of Kayak Launch: 20 [14.0%]
- Comments against Kayak Launch: 15 [10.5%]



**TOWN OF SURFSIDE
96TH ST PARK
Public Outreach #2
April 28th, 2021**

MEETING SUMMARY

The virtual meeting was held on Zoom on Wednesday, April 28th at 6:00 pm.

Presenters were:

NAME	COMPANY	E-MAIL	PHONE
Adriana Savino (AS)	Savino Miller Design Studio (SMDS)	adriana@savinomiller.com	305-895-9082 Ext. 301
Barry Miller (BM)	Savino & Miller Design Studio (SMDS)	barry@savinomiller.com	305-895-9082 Ext. 302
Shawna Meyer (SM)	Atelier Mey (AM)	shawna@ateliermey.net	612-414-7670
William Lane (WL)	William Lane Architects (WLA)	wlane@williamlane.com	305-865-7830
Tim Milian (TM)	Town of Surfside – Parks & Rec Director	tmilian@townofsurfsidefl.gov	305-866-3635 Ext. 282
Malarie Dauginikas (MD)	Town of Surfside Community Services & Public Communications Director	mdauginikas@townofsurfsidefl.gov	305-861-4863 Ext. 497

Meeting Notes:

TOWN OFFICIALS & COMMISSIONER COMMENTS:

1. Commissioner Nelly Velasquez

- a. Is the ground going to be raised?
 - i. BM: Yes, we are raising the ground to 9', as required per code.
- b. We want to make it clear that it cost 500,000 to repair the seawall we are willing to pay that back because we do not want to make the park public.
- c. Design looks great, it looks amazing thank you so much.

2. Commissioner Eliana Salzhauer

- a. Lovely designs.
- b. Not clear why we cannot have the two levels building in the NW corner. It would create more space into the park. Would like to explore that. We should not limit ourselves to these two options (although both are lovely).

- c. Does the two-level building give more programming space?
 - i. WL: Same programming indoor space for both buildings. Difference is access to additional views and more covered area for the two-level building. Note that we can easily extend the canopy for the one-story building.
 - ii. We would think an additional 1,000 SF on second floor of programming would be worthwhile, otherwise the one-level building is enough for the amount of programming as shown. We were hoping for more SF of programming as we are a highly functional community. Ideally would like to see the two-level building in the NW corner, it would be better than kids playing exposed to car emissions. We can remove windows exposed to the bridge.
- d. Commissioner Nelly Velasquez had proposed that lower part of building could be enclosed by glass walls. The two-story building would be great.
- e. Why are there two different staircases? Wouldn't it be better to keep the outdoor stairs and remove indoor ones? Could the stairs be switchback so that it is a softer drop for kids?
 - i. WL: The second set of stairs are a requirement of code, even if 10 people are up there, we need additional means of egress.
- f. For material selection, can we use the aerobics classes surfaces to prevent kids from hurting their knees? Please consider healthy and safe materials over beautiful aesthetics.
- g. For the water fountain, we would like the functional kind found at airports mounted on wall for bottle refills (vs. drinking directly from the fixture and having a standalone fixture that would take away from usable space).
- h. Why are there two sets of bathrooms? Can we just have one set of bathrooms to be accessed from indoor and outdoor?
 - i. WL: To prevent kids going to a class to access the public bathroom unattended. Might be a good plus.
- i. Kayak launch: residents of Surfside do not want a public park. Sea wall right now is public. Any kayak launch would be 100% for the public, and the park cannot sustain this program with limited parking.

3. Vice Mayor Tina Paul:

- a. Would both schemes be done within the same budget?
 - i. BM: The buildings have not been priced out yet, but the two-level building requires more vertical circulation so that would cost more. We can value engineer the two-level building (for example by removing the secondary bathroom).
- b. Size of field is reduced; how does it affect the program/soccer players and such?
 - i. TM: we are optimizing the space right now. We are increasing all areas and the multifunctional field is a suitable field for soccer.
 - ii. BM: The community room is multi-purpose, a flex room, could add movable partitions for different programs and events.
- c. Are both buildings same size footprint?
 - i. WL: Two-story building is a larger footprint than the one-story building.
- d. Which option uses more of existing trees?
 - i. BM: Both about the same (3 trees), but we will relocate them all on-site.
 - ii. TM: preserving trees is a priority, so any trees would be relocated and reused on site.

- e. Which of the buildings is more environmentally friendly and how would the water runoff affect neighbors across the street?
 - i. BM: We hold a lot of water on site by elevating the site.
- f. If we select scheme 2, what can protect the building from balls?
 - i. BM: It will have hurricane resistant windows, so it will be a tough building.

4. Commissioner Nelly Velasquez:

- a. Why is the one-level building a smaller footprint?
 - i. WL: the two-level building is more compressed.
- b. NV: would be nice to enclose the first level on demand
 - i. WL: This can be possible.
 - ii. AS: Covered structure can be programmable for events if desired, but it would be nice to have the open space and keep it flexible instead of enclosed.
 - iii. Vice Mayor Tina Paul: agree that it's a park, so not enclosing it makes sense.

5. Mayor Charles W. Burkett:

- a. Great job Barry and team.
- b. Love the two-level building centered with panoramic view. Functional, fantastic, and right about not having the building by the bridge functionally.
- c. Love the kayak access area. Brilliant to move entrance to the south.
- d. Preserving canopy is good down the road.
- e. Comment earlier about survey regarding kayak launch survey - important to know that it was an unofficial type of survey where people could vote over and over again.
- f. Congratulations, moving in the right direction.
- g. Containing flood water is great. Dispose of it on site or into the ocean, but not into the neighborhood.
- h. Raising the park is key, we want to raise as much as we can.
- i. We do not want to cut corners on building. Residents want fantastic park, so we are willing to give the best option to our residents.

PUBLIC COMMENTS:

1. Yael:

- a. Lives across the street from park.
- b. Lovely design.
- c. Everything done to park really affects us.
- d. Even through it is for the best intentions, the Kayak launch would be devastating for us.
- e. The park should be only for kids, not for strangers from all over the place, even if it sounds lovely. It is a small community and can't be something we can accommodate.
- f. One-story building is lovely.

2. Joshua Epstein:

- a. Lives on Bay Dr.
- b. One-story building is better, can't see benefits of two-story building. Every time we go to community center we wonder why it has two levels.
- c. Kayak launch not fair to be based on the survey results because 72% said other locations for kayak launch.
- d. There is a plan about closing Bay street, so that would be difficult for kayaks.
- e. In general, not feasible to have the kayak launch at the park, there are so many other places to do it.
- f. Field: we use entire field for events, how are we going to accommodate multi events/programs occurring at the same time?

- i. TM: We are maximizing green space and we will continue to host the same events, and run events indoors that previously were done outdoors.
- g. What will happen to the high school basketball court? Too big for small kids.

3. Jeff Rose:

- a. Scheme 2 for functionality would be better but next to bridge. During soccer classes, it would be hard to keep an eye on playground and soccer at the same time.
- b. Active rooftop would be good, not much more to give an access to the roof, why not utilize all the space? For yoga classes etc. Can extend the elevator. Accessibility exception to code with rails for mechanical equipment on top.

4. Commissioner Nelly Velasquez:

- a. When planning on starting and planning to be closed for?
- b. BM: As soon as possible, we will create a real schematic plan to present, when we get approval we will move forward. We should get a permit within 6 months from the final approval of the plan.
- c. Kelly Hitzing: Expecting to receive permitting end of fall/winter, and account for a year of construction with the building.
- d. BM: The park will be closed for a year while multipurpose field + basketball court can be used and protected with fence temporarily.
- e. When commission will see final design to approve?
 - i. Kelly Hitzing: We are completing the outreach process, then we have the commission meeting on May 11 to approve the design and review the survey results to move forward. Next: check-in with commission about pricing: date TBD. Will share next steps on May 11.

5. Andrew Craven:

- a. Lives across the street from park.
- b. Very impressed with both schemes. Beautiful.
- c. Concern with the increased programming at the park. It is already a parking nightmare with current program. No parking at all when soccer occurs. Driveways become blocked and become turn-around spaces. No real resolution to the street problems.
- d. Kayak launch not the topic for the day but another programming issue for parking.
- e. Noticing a recurring pattern with people from the south preventing the kayak and paddle boards so there is an attempt to push for a kayak launch in the North.
- f. Advise against baseball on field, it would be terrible for maintenance.

6. David

- a. Lives on Bay Drive.
- b. Thank you for the great work.
- c. Using second story rooftop would gain space.
- d. Opposed to kayak launch. Even if intended to Surfside residents only, it would still be public, which will attract many people and lead to parking issue.

7. Sam Greenwald:

- a. Lives on Bay Drive
- b. The designs are really nice.
- c. 5 kids, two born here. Use daily + weekends.
- d. To take away 10' for kayak launch from current usage is a lot. 10' could be added back in for usage. There are many other potential areas in Surfside. The canal is already very busy with boats, not safest spot to launch. Money to make it private would be best invested for another kayak launch elsewhere, maybe next to parking space next to Indian creek police department, 88th Street lots of parking. Would be safer to launch there.
- e. Both one-story and two-story buildings are good. Third level is a good idea.

8. Sylvio Landell

- a. Congratulate project, beautiful design.
- b. Not a big park, so everything presented looks great.
- c. Agree internal space should be bigger but I like the outdoor space.
- d. Maybe a blend with larger indoor space? Smart walls would be a good idea.
- e. The park is for all ages, and it would be a dream come true to see kayaks, and to see all activities merge.
- f. Should incentive people to scoot and bike, but haven't seen any parking for those. Large parking for those would incentivize, should focus on that.

9. Anton Diego

- a. Lives on Bay Drive across the street from the park.
- b. The design and work are incredible.
- c. Not going to talk about the kayak, it is clearly not happening since residents don't want it.
- d. Parking: right now only 7 cars can park there. Would like to see 10' of length of kayak to be considered to add diagonal parking to increase parking spaces. Would like to block and enforce no parking signs on resident side of street to maintain parking spots. Would like to see parking addressed in design.
 - i. BM we tried an option with 45 deg street parking. It is a tight drive/parking without moving the curb and stormwater system. And if we did, it would be very expensive. Also, fire lane at the end of Bay Drive, so can't have parking encroach.
- e. Can we use the allocated square footage of the kayak launch for parking on site instead?
 - i. BM: same issue, messing with the curb would be costly, also note that the maintenance path that doubles as kayak path – it isn't taking away from the park, it is reinforced lawn.
- f. Planning for a three-level building with that much programming with only 7 parked cars is absurd. City must take this into account.

Anton's wife:

- g. Agree about parking load. Maybe parking lot closeby?
- h. It would be a great idea to add stairs to get from the intercostal to use launch pad closer to them.
- i. Private and public: how can we police that?
 - i. Commissioner Eliana Salzhauer: The park cannot be private if kayak launch exists.
 - ii. Commissioner Nelly Velasquez: The park can be private if kayak launch exists.

10. Herz

- a. Lives on Bay Drive across from park.
- b. Also concerned with parking.
- c. Bay Harbor park has a mesh to protect balls flying over – would we be having the same?
- d. Same worries for kayak launch.

11. Ashley Turchin

- a. Goes to park every day.
- b. Always chasing after field and playground, would be better to have playground closer to field.
- c. Everything beautiful, so excited.
- d. Assuming beautiful trees are staying, what happens to roots and surface material? Kids are always tripping on roots - keep that in mind. We hate the mulch it is dirty and creates a mess at home.

- i. BM: will develop materiality in DD. With existing trees, it is dangerous to cover roots with impervious surfaces and even with pervious surfaces, percolation will be tricky.

12. Gerardo Vildostegui

- a. I like the designs very much.
- b. Hope that the landscape will add Florida natives + information about them. Town's landscapes are not sensitive for that issue.
- c. Sylvio Landell's bike racks idea is great. Small, covered structure so that the seat doesn't get wet.
- d. Wouldn't want to add more car parking, don't want to take away space from the park. When you add parking you encourage more driving. Adding Permit parking on east side is fine. Hope to make public space for all comers. Grew up in Surfside since 1 yo. Why is everyone so skeptical about other people and scared about the unknown? Let's not let fear guide our design.

13. Ben Frank's wife

- a. Buying lot next to the park was brought up.
- b. Adding 1700 of community space can cause a lot of traffic.
- c. Love the shaded bike parking idea.
- d. I like free flowing free space vs enclosing the first level. The face that we have enclosed space is already a huge improvement, no need more.
- e. Maybe a walking/biking incentive for people could be cheaper classes.

14. Bella Krieger

- a. Lives on Bay Drive, across of park.
- b. House near the park is on the market and with all the reserves the town has, don't see why we can't buy that and make the park even more spectacular to solve the kayak and parking issue.
- c. I am personally against kayak just because of limited parking, but open to it if purchase the lot. What is hesitation? Obviously financial but curious. Great that it is on sale while designing the park...

15. Janice and Niles
Janice

- a. The kayak data survey is confirmed and may not be a scientific survey but it was still great with over 500 responses after cleaning up data. Majority wants kayak launch. May not want at 96th st park, but most didn't have a preference on where it went. If opposed it would've stated that, probably a minority of people.
- b. Concern: nowhere in any outreach did people ask for programming. People didn't ask for large building, we just want more open green space with some bathroom. Concern of losing space on multipurpose field and not sure what shaded plaza used for, loss of program space.

Niles:

- c. 3 young kids, and we bike for soccer.
- d. Would love to kayak w kids. Park is the only place to have kayak launch.
- e. Feel like community Center won't be used. Build one on a new lot, but not on park lot.

16. Abe Goldschmidt

- a. Agree outdoor space as much as possible. Family in favor of kayak launch at 96th street and not at street end.
- b. Thank you for the hard work.

17. Franc MacBride

- a. Is it true that the kayak launch has been mandated by the mayor?
 - i. TM: No, it was said at the commission meeting to show where kayak launch would fit in the park, and this is what we are reflecting.

BM: during the first community presentation, we didn't show it, but want to remind you that you have a compact town, everything is 10-15 min walk / bike ride. Easily accessible with alternate modes of transportation. Any way we can incentivize would be great. I know that people have kids but it's really not far.

18. Sandra Souls

- a. Love kayak idea, real concern is lots of kids walking in - safety is my priority.

19. Sam Greewald:

- a. Majority walks to park. Walking with kayak is heavy and cumbersome.

20. Caroline Baumel

- a. Enjoyed most of presentation, done very nicely but didn't follow all the information shared.
- b. Is there another kayak launch area in Surfside specifically?
- c. Parking situation – does the city have guidelines for buildings + parking spots reserved for people working there?
- d. We do not have the right amount of spaces for kayak launch.
- e. Not in favor of kayak launch

21. Debby

- a. While understand neighbors not wanting kayak launch, a lot of people have been wanting it. Got to remind people no perfect area in Surfside for that, all residential. Something has to give, we need to meet in the middle. We can make it harder for people to come.
- b. We need to motivate people to come via wagon and bicycle. We do live in a tiny neighborhood. Everyone needs exercise.
- c. Kennedy park in coconut grove has more adult-oriented equipment, would like that.
- d. I encourage native plants and raising the ground as much as possible.

22. Fernanda

- a. Building is beautiful, park is beautiful.
- b. Pro kayak, but agree about the parking issue.

23. Sebastian Portillo

- a. Kayak sounds complicated to have in the park. We can't have it all. We should have people register to be able to launch a kayak + sign appropriate releases to not sue the city and some sort of badge access card to go through a door to reserve to residents only. Or the launch can be near the police station where the little path is, and it will help expedite park construction.

TOWN OFFICIALS & COMMISSIONER COMMENTS:

1. Kayak Launch:

- a. Commissioner Nelly Velasquez: The lot near the police station by Indian Creek belongs to Indian Creek and cannot be purchased, so it's not an option.
- b. Commissioner Eliana Salzhauer: Our sea walls in this town from 96th park to the south are public because we got \$500,000 from the state of FL to repair them, so we cannot control

access to the kayak launch with a badge or gate until we pay back the state (with their approval). Our park is currently open to anyone by choice, we don't intent to keep people out but want to be able to close and reserve to residents for events. I think we should buy the land next door.

- c. Commissioner Nelly Velasquez: The town has the money to pay back the sea wall, and we can hire attorneys to help convince the state.
- d. Vice Mayor Tina Paul: The sea wall of the lot next door is crumbling and would have to be repaired as well. People want the kayak launch and they chose 96th park. Street ends are private.
- e. BM: kayak launch can be on site or does't have to go in, but will speed the process if can focus on the design other than the kayak launch.

2. Building

- a. Commissioner Eliana Salzhauer: One story building is fine, and if it's two levels there has to be enough programming to be a strong reason for it and it would have to be placed in the northwest corner tucked away.
- b. Vice Mayor Tina Paul: Park is small, keep it small, I like the two levels building. If it is just one level, why not renovate the existing one?

These notes are submitted by Savino & Miller Design Studio. Please contact Savino & Miller Design Studio with any corrections or additions. If no corrections or additions are received within (5) working days of distribution, the content will be assumed to be agreed upon by all parties.

End of Notes